

2014-2015

Enclosure

Instrument box/Connection box/Pushbutton box

TYBOX

**TAYEE**

Enclosure



Contents

Basic technical data	04
Accessories And Dimension Chart	05
Schematic Installation Drawing	08
036 series standard products	10
065 series standard products	12
085 series standard products	15
105 series standard products	18
165 series standard products	21
200 series standard products	23
TYX(065) series pushbutton box	25
TYX(085) series pushbutton box	28
TYX(105) series pushbutton box	31
TYX1-1(050) series pushbutton box	33
135 series standard products	34
130 series standard Products	37
casting aluminum waterproof enclosure box	39
Special Order of TYBOX	40



Basic technical Data

How to choose box correctly

Please consider the following points when you are choosing the boxes you need:

Service range(indoors/outdoors;hazardous area;severely corrosion range)

Dimensions(according to the size of installed body)

Protection function(degree of protection IP)

Choice of box material

	Indoors	Outdoors	Explosion proof Ex	Shielding EMC	Insulation	High temperature	Anti -corrosion	Height and impact
Polycarbonate	✓	✓		✓	✓	✓	✓	✓
ABS	✓	✓		✓	✓			

Remark:the materials with " ✓ " are provided with corresponding functions in column.The shielding function should need relevant working.

Stability of box temperature

Stability of box temperature means the maximum temperature when the housing and degree of protection are not changing. Immediate surmountable temperature of the box is higher than maximum temperature. To electronic element which is packed inside, stability of box temperature means the maximum of box temperature which it can reach in the interior because of the elimination of heat during its normal work.

Chemical reagent	Polycarbonate (Housing material)	Silicone rubber (Seal material)	Chemical reagent	Polycarbonate (Housing material)	Silicone rubber (Seal material)	Chemical reagent	Polycarbonate (Housing material)	Silicone rubber (Seal material)
Acetone	-	·	Fuel oil	·	·	Hydrochloric acid	20%	/
Formic acid	30%	·	Hydraulic fluid	+	·	Lubricating oil	+	+
Ammonia	-	+	Caustic potash solution	-	/	Carbonyl sulfide	-	-
Gasoline	·	+	Potassium chloride	+	+	Sulfuric acid	50%	25%
Benzol	-	-	Potassium hydroxide	/	·	Soap solution	·	+
Buffer solution	-	+	Flax-seed oil	+	·	Detergent	+	+
Butane	+	-	Methanol	-	+	Turpentine oil	/	-
Butanol	/	-	Methyl oxide	-	-	Carbon tetrachloride	/	-
Calcium Chloride	+	/	Lactic acid	10%	-	Toluene	-	-
Benzene chloride	-	-	Mineral oil	+	+	Trichloroethene	/	-
Diesel fuel	·	·	Machine oil	+	+	Water	+	+
Acetic acid	10%	-	Sodium carbonate	+	/	Tartaric acid	10%	+
Formaldehyde	/	-	Sodium chloride	+	+	Xylene	-	-
Freon113	+	/	Sodium hydroxide	/	·	Zinc sulfite	+	+
Fruit juice	+	+	Soda solution	-	-	Citric acid	10%	+
Glyceride	·	+	Nitric acid	10%	-			

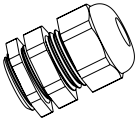

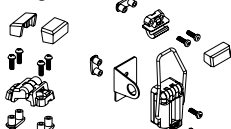






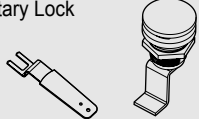
+Stable at any concentration - Unstable



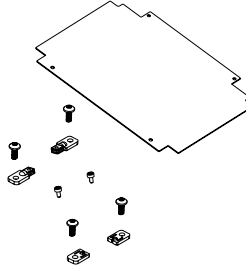
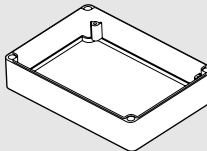
%Protecting stability at the maximum concentration

/No signal

·Stable in condition limit

Attachment

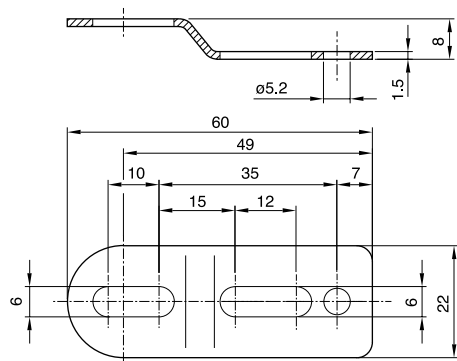
Description	Type
	PG7 PG13.5
	PG16 PG21
	M16 M20
	M22 M25
	M30 M32
	M40 M50
	TG1
	TG2
	TJA (小)
	TJB (大)
	TJC (小)
	TJD (大)
	BS01 Chrome Plated Surface
	BS02 The Surface Is Golden And The Button Is Red
	BS03 The Surface Is Golden And The Button Is Red
	BS04 Golden
	BS05 Golden
	BS06 Chrome Plated Surface
	BS08 Chrome Plated Surface

Description	Type	Dimensions
	XB10501	118 × 82
	XB10502	188 × 138
	XB10503	238 × 162
	XB10504	286 × 186
	XB13001	264 × 174
	XB13501	171 × 171
	XB13502	336 × 236
	XB13503	286 × 286
	XB16501	386 × 286
	XB20001	485 × 385
	DB10502	186 × 136
	DB10503	237 × 162
	DB10504	283 × 183
	DB13001	254 × 164
	DB13501	169 × 169
	DB13502	334 × 234
	DB13503	284 × 284
	DB16501	381 × 281
	DB20001	480 × 380
	QB10502	187 × 136
	QB10503	237 × 160
	QB10504	284 × 186
	QB13001	264 × 163
	QB13501	167 × 169
	QB13502	224 × 334
	QB13503	274 × 284
	QB16501	382 × 280
	QB20001	482 × 380
	F10502(ABS)	200 × 150 × 50
	PF10502(PC)	200 × 150 × 50
	F10503(ABS)	250 × 175 × 50
	PF10503(PC)	250 × 175 × 50
	F10504(ABS)	300 × 200 × 50
	PF10504(PC)	300 × 200 × 50
	F13001(ABS)	280 × 190 × 50
	PF13001(PC)	280 × 190 × 50
	F16501(ABS)	400 × 300 × 65
	PF16501(PC)	400 × 300 × 65

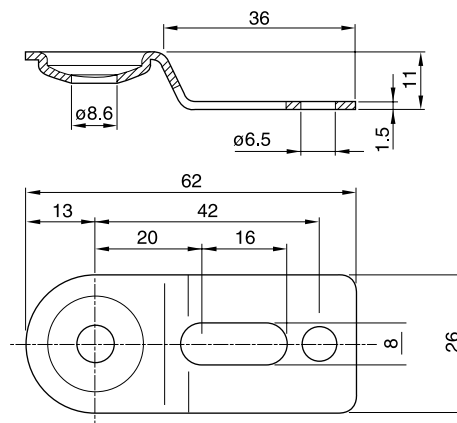
- Note:
- Each set of hook comprises two hanging parts. TJA and TJB comprise two hinges and one hasp of which can be used for padlocking. TJC and TJD comprise two hinges and two hasps (one of the hasps can be used for padlocking)
 - All locks are only applicable to 135 series, 165 series and 200 series enclosure.
 - After lock is installed, transverse space inside the enclosure decreases by 60mm, take B16501 for instance, interior space of it is 372 X 272 X 144 before the lock is installed, and usable interior space decreases to 372 X 212 X 144 after the lock is installed.
 - The mounting plate and turnover panel can not be installed after installing the lock.
 - Protection level of the enclosure is IP40 after installing the lock.

External Dimension Chart Of Accessories

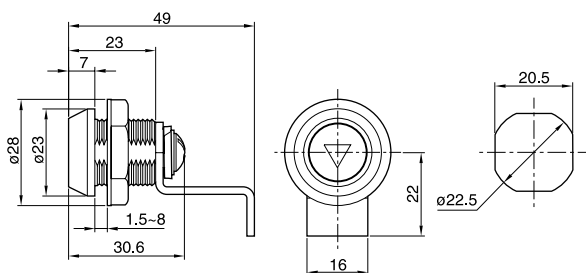
TG1 Hook



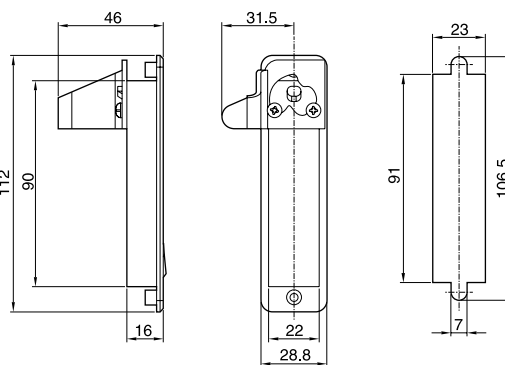
TG2Hook



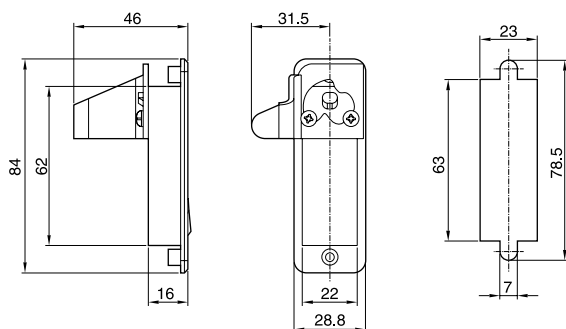
BS01



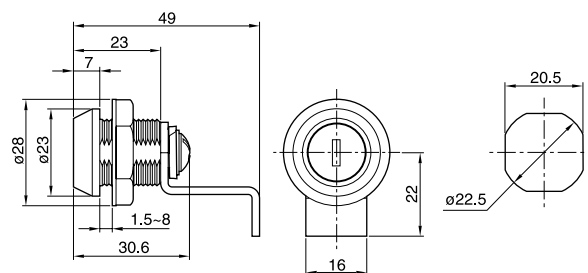
BS02/BS03



BS04/BS05

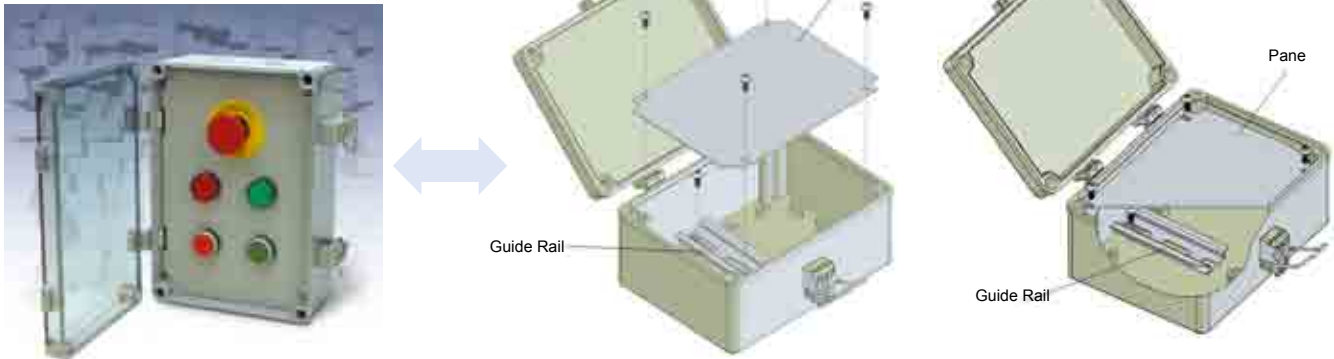


BS06

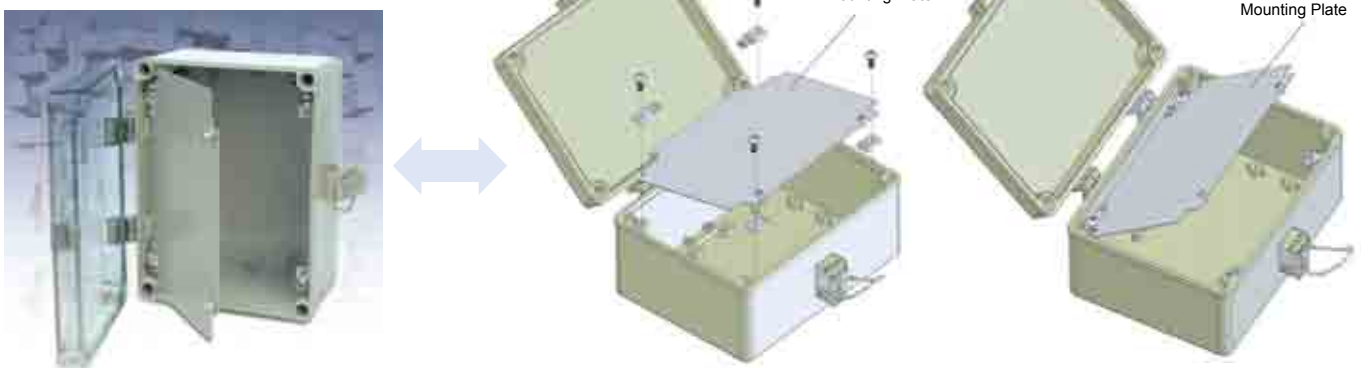


Schematic Installation Drawing

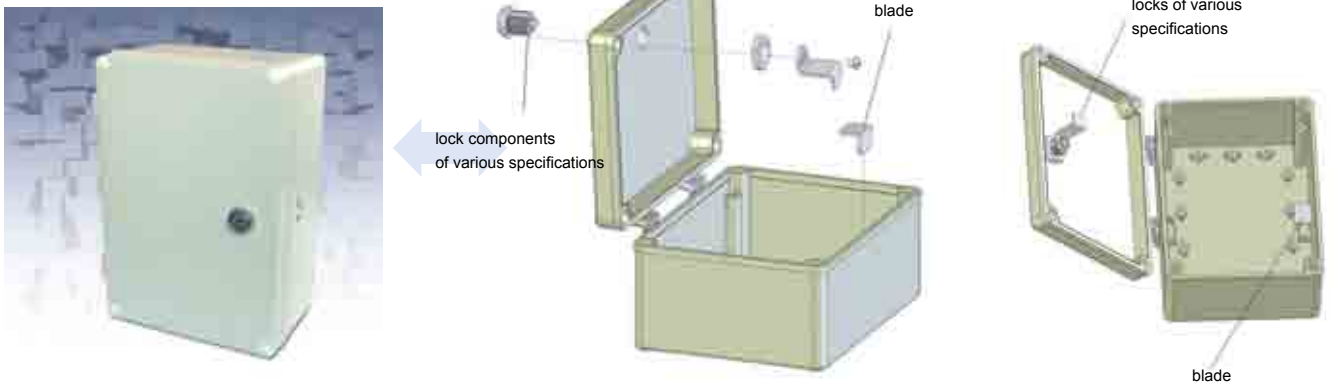
Install Mounting Plate



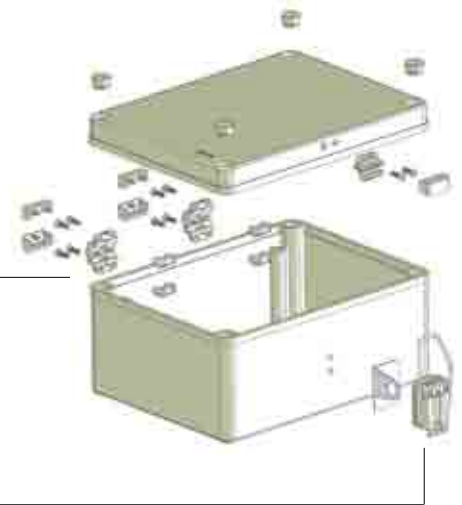
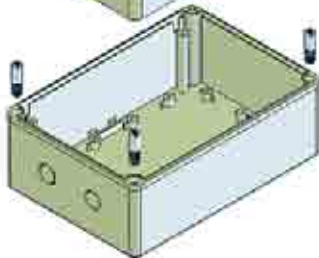
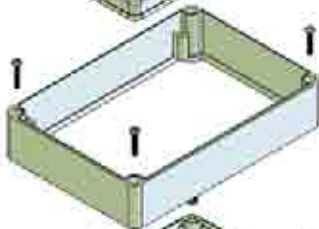
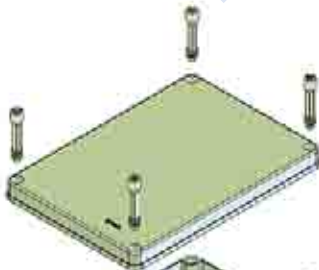
Install Turnover Panel



Install Lock

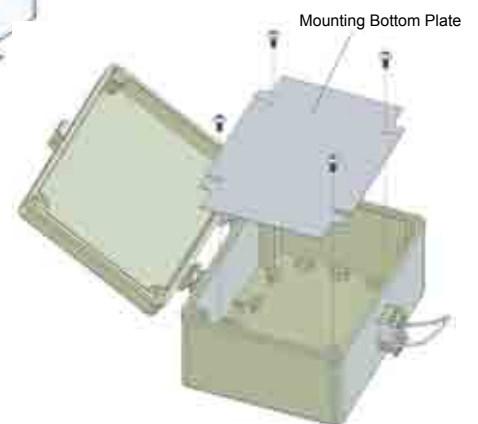
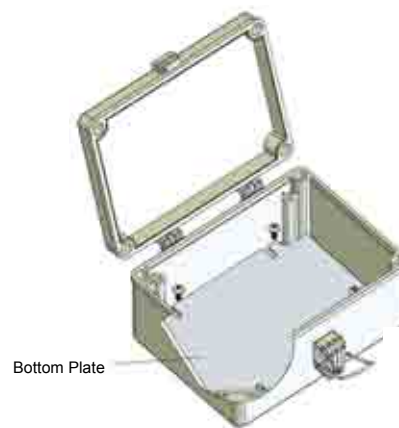


Heightening



Install Hinge

Install Mounting Bottom Plate



036Series Standard Product

Product description

Two kinds of materials: Flame intense retardant ABS and PC

Degree of protection IP65

Integrated with cable joints

2 sizes

Integrated with terminals and cable joints



Technical data

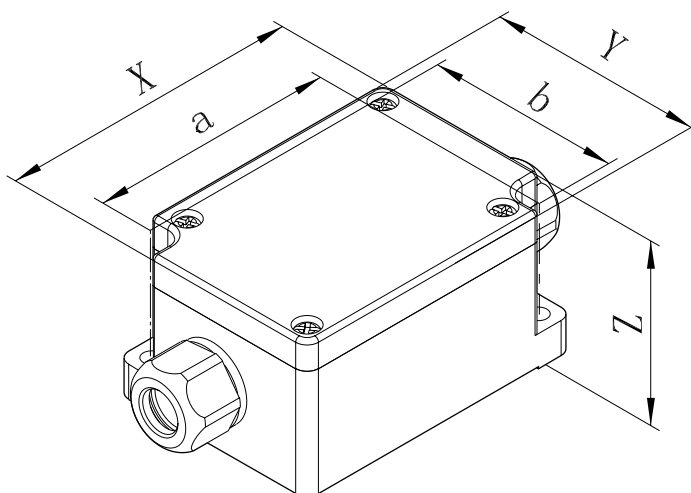
Material		Polycarbonate(PC)	ABS
Degree of protection		IP65	IP65
Anti-impact		IK08	IK07
Insulation protection		Complete insulation	Complete insulation
Temperature		-40°C~ 120°C	-40°C~ 80°C
Flame retardant		V ₂	V ₀
Chemical stability		Good	Good
Color	Base	RAL7040/RAL7021	RAL7032/RAL7021
	Cap	RAL7040/RAL7021	RAL7032/RAL7021
Toxicity		No halogen	No halogen
UV resistance		UL 508	
RoHs compliant		YES	NO

The details of the material see P4

Note: 1. ABS Material enclosure box, If need it meets RoHS, can make special order but the box flame retardant is HB(no flame retardant).

2. The box of ABS and PC can be specially customized in black color. When ordering, remark BLACK after the model number.

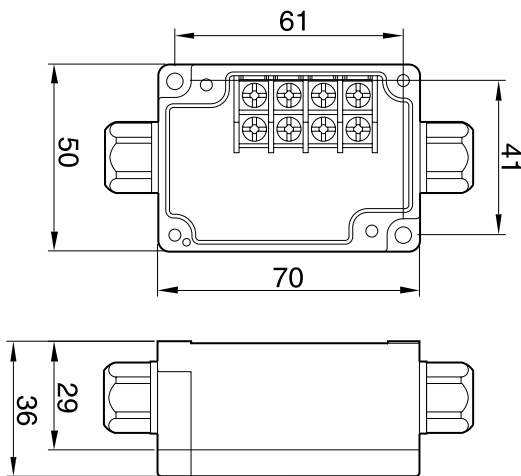
Overall dimensions



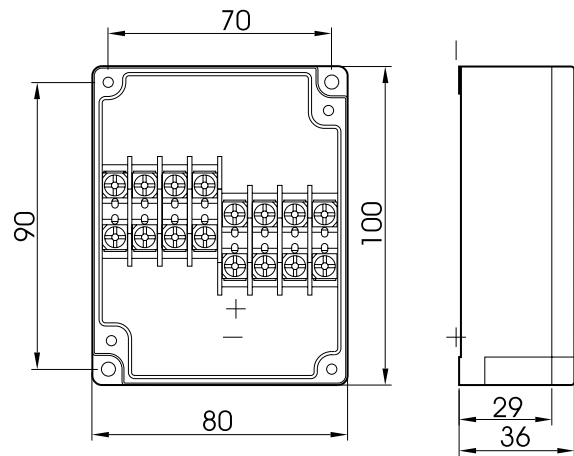
036 series without Prefab holes

Order type				Dimension		Accessory selection		
ABSgray cap		PCgray cap		Size (x*y*z)	Cut-out center distance(a*b)	Hinges	Heightened	Galvanized sheet
B03601	Integrated 4 pairs of terminals	P03601	Integrated 4 pairs of terminals	70 × 50 × 36	61 × 41	-	-	-
B03603	Integrated 8 pairs of terminals	P03603	Integrated 8 pairs of terminals	100 × 80 × 36	90 × 70	-	-	-
B03604	Integrated 16 pairs of terminals	P03604	Integrated 16 pairs of terminals	100 × 80 × 36	90 × 70	-	-	-
Range Of Wiring≤10mm ²						- No Such Function		

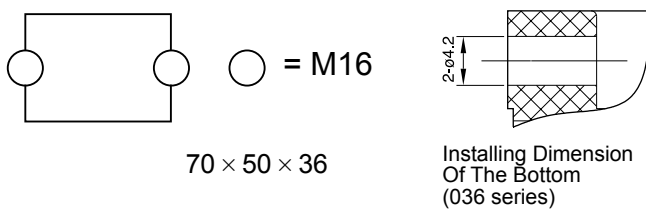
Overall dimensions & prefab hole position drawing



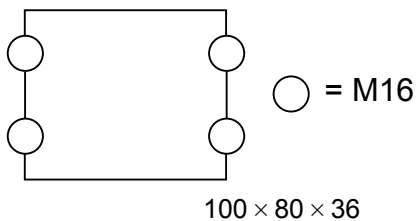
70 × 50 × 36
(B03601 / P03601)



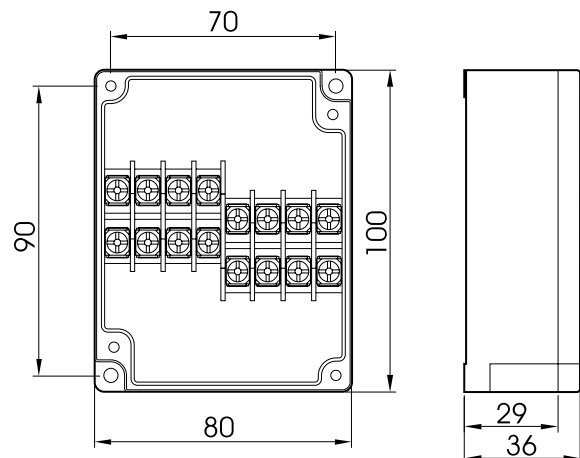
100 × 80 × 36
(B03603 / P03603)



70 × 50 × 36



100 × 80 × 36



100 × 80 × 36
(B03604 / P03604)

Remarks: ○-prefab hole: M -dimension unit symbol of cable joints(Metric system)

065 Series Standard Product

Product description

Two kinds of materials: Flame intense retardant ABS and PC

Degree of protection IP65

Two types: without prefab hole & with prefab hole

8 sizes

Two kinds of caps: gray & transparent caps; the transparent ones are all made of PC material

Installation cut-out inside for installation panel and rail fixation

Many kinds of accessories to choose.



Technical data

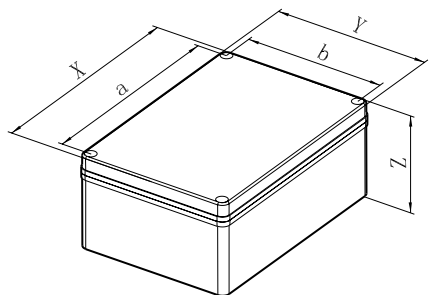
Material		Polycarbonate(PC)	ABS
Degree of protection		IP65	IP65
Anti-impact		IK08	IK07
Insulation protection		Complete insulation	Complete insulation
Temperature		-40°C~ 120°C	-40°C~ 80°C
Flame retardant		V ₂	V ₀
Chemical stability		Good	Good
Color	Base	RAL7040/RAL7021	RAL7032/RAL7021
	Cap	RAL7040/RAL7021	RAL7032/RAL7021
Toxicity		No halogen	No halogen
UV resistance			UL 508
RoHs compliant		YES	No

The details of the material see P4

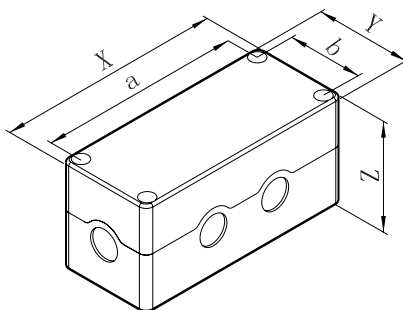
Note: 1. ABS Material enclosure box, If need it meets RoHS, can make special order but the box flame retardant is HB(no flame retardant).

2. The box of ABS and PC can be specially customized in black color. When ordering, remark BLACK after the model number.

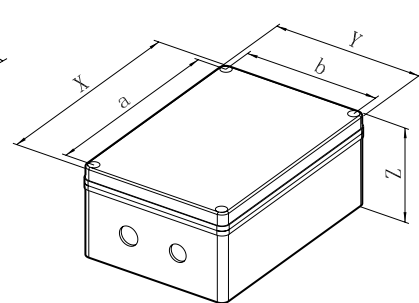
Overall dimensions



065 series without prefab holes



065 series with prefab holes



065 series with prefab holes

065 series without prefab holes

Order type				Dimension		Accessory selection			
ABSgray cap	ABStransparent cap	PCgray cap	PCtransparent cap	Size (x*y*z)	transparent cap (a*b)	Hinges	Heightened	Panel	Hook
B06505	B06505C	P06505	P06505C	130 × 130 × 65	112 × 112	TJA	-	-	TG1
B06506	B06506C	P06506	P06506C	175 × 130 × 65	157 × 112	TJC	-	-	TG1

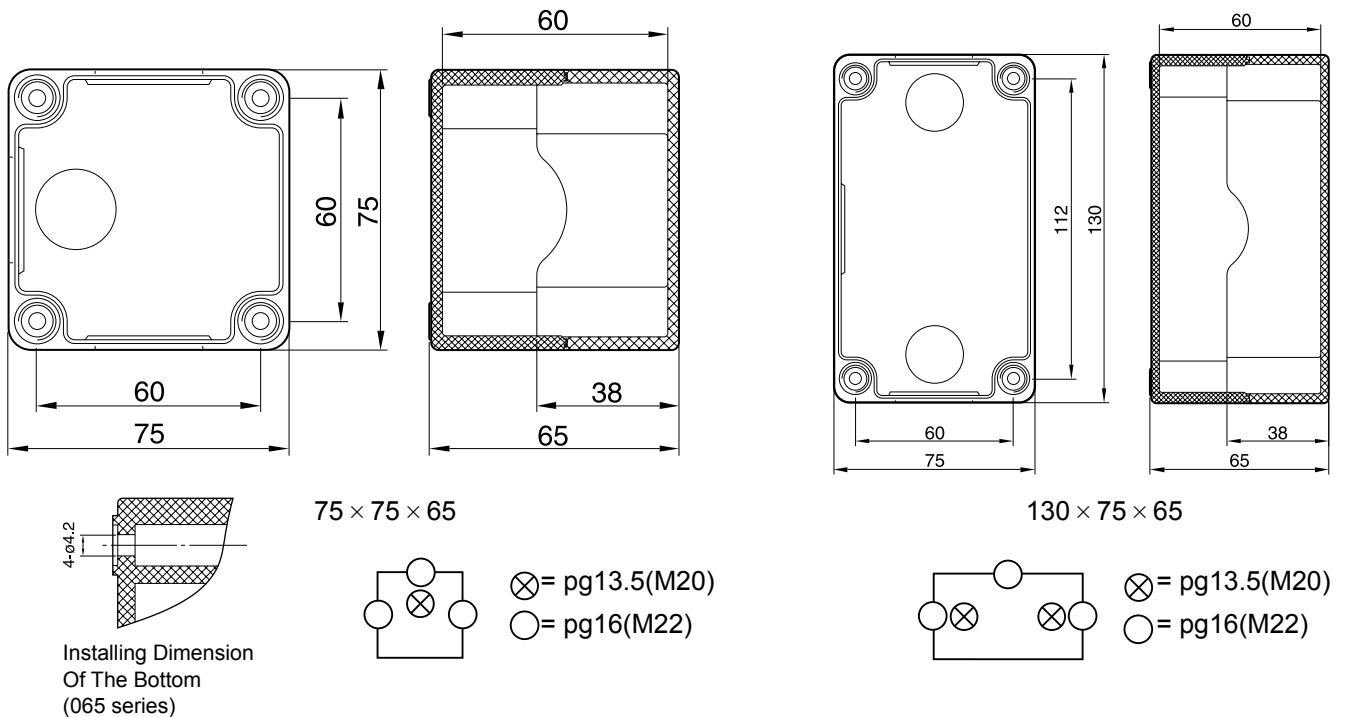
- No Such Function

065 series with prefab holes

Order type				Dimension		Accessory selection			
ABSgray cap	ABStransparent cap	PCgray cap	PCtransparent cap	Size (x*y*z)	Cut-out center distance(a*b)	Hinges	Heightened	Panel	Hook
B06501A	B06501AC	P06501A	P06501AC	75 × 75 × 65	60 × 60	-	-	-	TG1
B06502A	B06502AC	P06502A	P06502AC	130 × 75 × 65	112 × 60	-	-	-	TG1
B06503A	B06503AC	P06503A	P06503AC	175 × 75 × 65	157 × 60	-	-	-	TG1
B06504A	B06504AC	P06504A	P06504AC	220 × 75 × 65	202 × 60	-	-	-	TG1
B06505A	B06505AC	P06505A	P06505AC	130 × 130 × 65	112 × 112	TJA	-	-	TG1
B06506A	B06506AC	P06506A	P06506AC	175 × 130 × 65	157 × 112	TJC	-	-	TG1

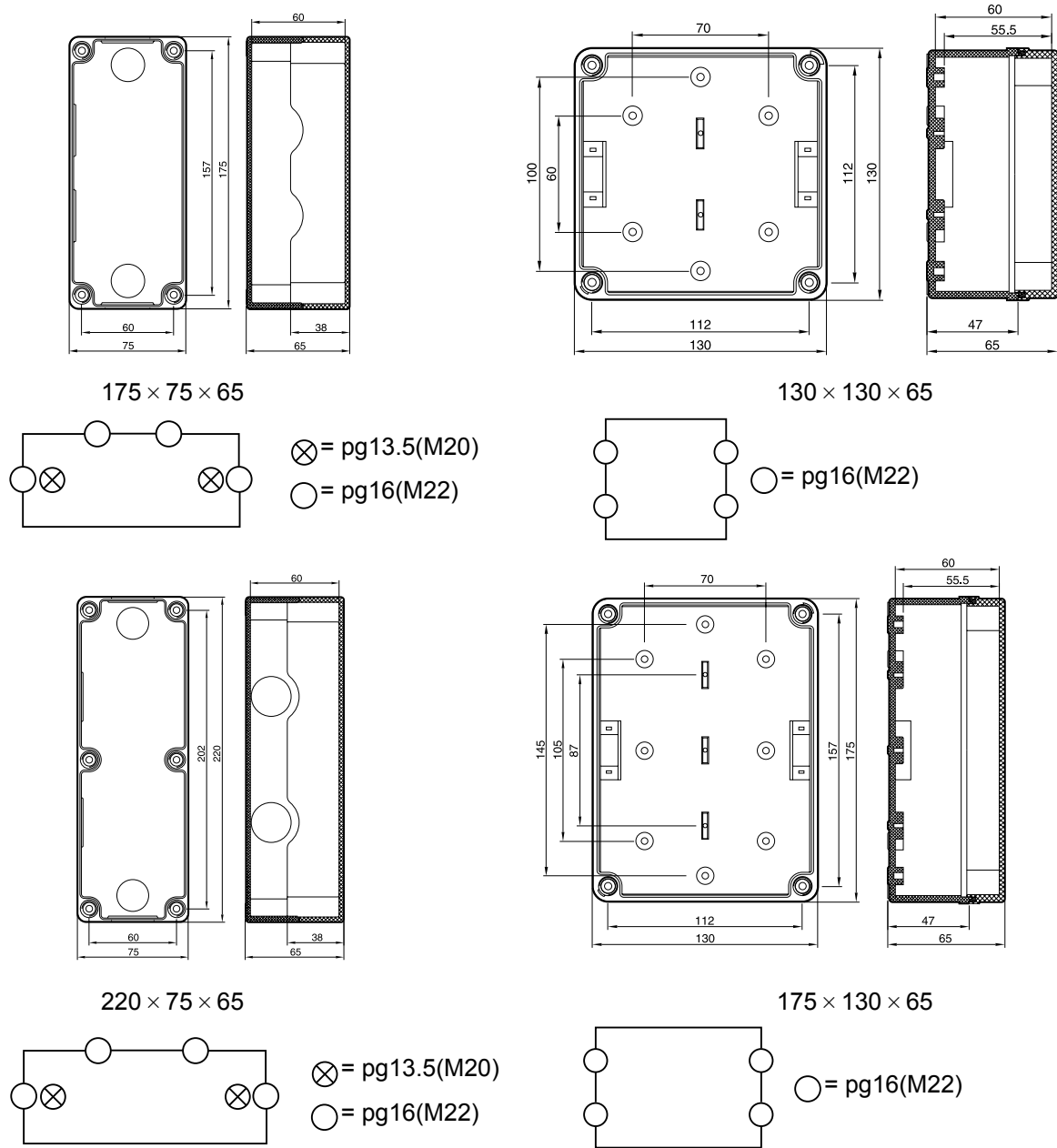
- No Such Function

Overall dimensions & prefab hole position drawing



Pemarks: ⊗○-J=prefab hole of different dimensions; PG -dimension unit symbol of cable joints(British system);M - dimension unit symbol of cable joints(Metric system)

Ocweall dimensions & prefab hole position drawing



065 Series OEM

We will be your best supplier if you want special working. Our company has many facilities to satisfy your demands. We offer services such as lettering, wiring, providing terminals, universal joints, cable joints, buttons and indicators. Please attach the drawing with the OEM. (Details see P40)

TYBOX

M

B06501

/

F

J

M-Product of
special working

order type of
standard product

order number of
special configuration
(offered by TAYEE)

Require addition
of height

Require hinges

085 Series Standard Product

Product description

Two kinds of materials: Flame intense retardant ABS and PC

Degree of protection IP65

Two types: without prefab hole & with prefab hole

8 sizes

Two kinds of caps: gray & transparent caps; the transparent ones are all made of PC material

Installation cut-out inside for installation panel and rail fixation

Many kinds of accessories to choose.



Technical data

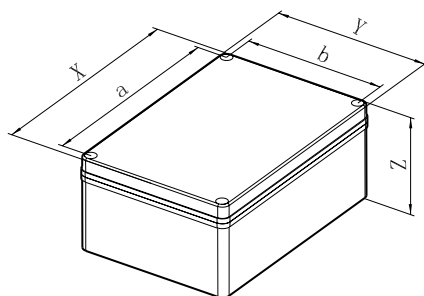
Material		Polycarbonate(PC)	ABS
Degree of protection		IP65	IP65
Anti-impact		IK08	IK07
Insulation protection		Complete insulation	Complete insulation
Temperature		-40°C~ 120°C	-40°C~ 80°C
Flame retardant		V ₂	V ₀
Chemical stability		Good	Good
Color	Base	RAL7040/RAL7021	RAL7032/RAL7021
	Cap	RAL7040/RAL7021	RAL7032/RAL7021
Toxicity		No halogen	No halogen
UV resistance		UL 508	
RoHs compliant		YES	NO

The details of the material see P4

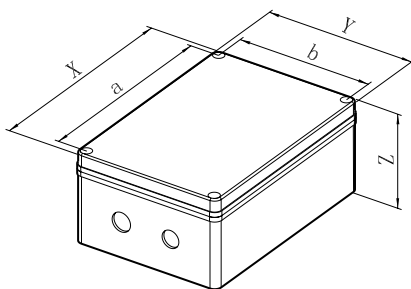
Note: 1. ABS Material enclosure box, If need it meets RoHS, can make special order but the box flame retardant is HB(no flame retardant).

2. The box of ABS and PC can be specially customized in black color. When ordering, remark BLACK after the model number.

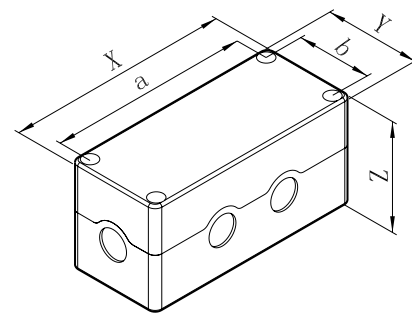
Overall dimensions



085series without prefab holes



085series with 2 prefab holes



085series with 4 prefab holes

085 series without prefab holes

Order type				Dimension		Accessory selection			
ABS gray cap	ABStrasparent cap	PC gray cap	PCtransparent cap	Size (x*y*z)	Cut-out center distance (a*b)	Hinges	Heightened	Panel	Hook
B08505	B08505C	P08505	P08505C	160 × 120 × 85	142 × 101	TJA	-	-	TG1
B08506	B08506C	P08506	P08506C	220 × 120 × 85	201 × 102	TJC	-	-	TG1

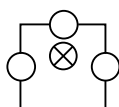
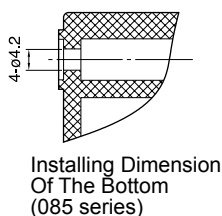
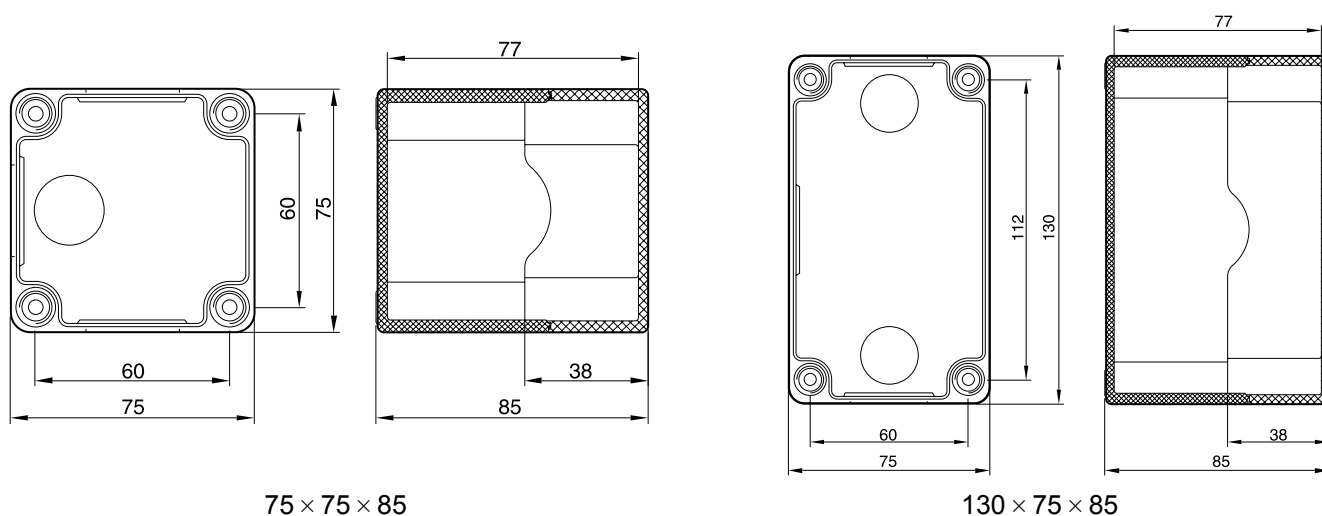
- No Such Function

085 series with prefab holes

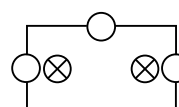
Order type				Dimension		Accessory selection			
ABS gray cap	ABStrasparent cap	PC gray cap	PCtransparent cap	Size (x*y*z)	Cut-out center distance (a*b)	Hinges	Heightened	Panel	Hook
B08501A	B08501AC	P08501A	P08501AC	75 × 75 × 85	60 × 60	-	-	-	TG1
B08502A	B08502AC	P08502A	P08502AC	130 × 75 × 85	112 × 60	-	-	-	TG1
B08503A	B08503AC	P08503A	P08503AC	175 × 75 × 85	157 × 60	-	-	-	TG1
B08504A	B08504AC	P08504A	P08504AC	220 × 75 × 85	202 × 60	-	-	-	TG1
B08505A	B08505AC	P08505A	P08505AC	160 × 120 × 85	142 × 101	TJA	-	-	TG1
B08506A	B08506AC	P08506A	P08506AC	220 × 120 × 85	201 × 102	TJC	-	-	TG1

- No Such Function

Overall dimensions & prefab hole position drawing



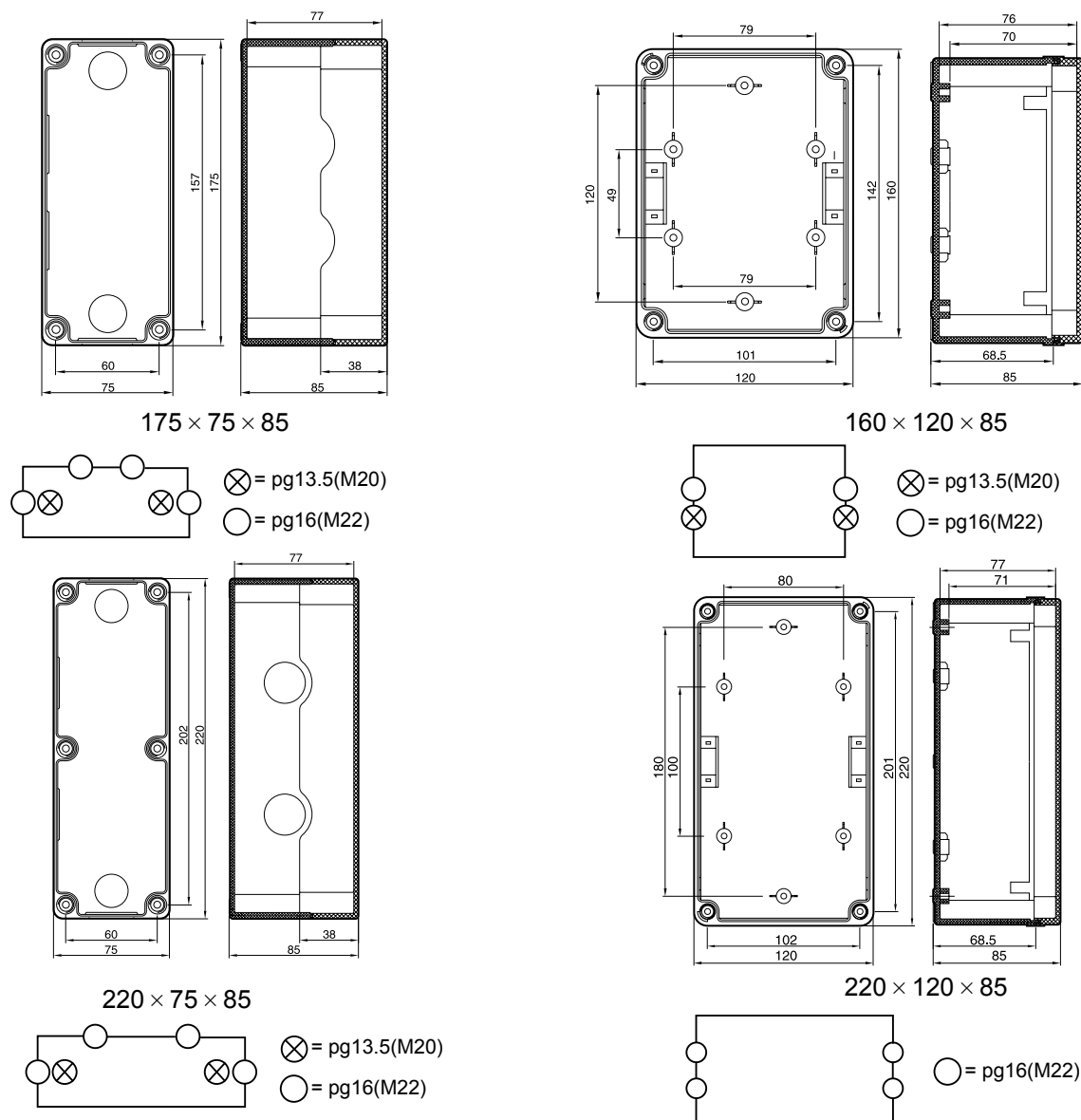
⊗ = pg13.5(M20)
⊙ = pg16(M22)



⊗ = pg13.5(M20)
⊙ = pg16(M22)

Pemarks: ⊗○-J=prefab hole of different dimensions; PG -dimension unit symbol of cable joints(British system);M - dimension unit symbol of cable joints(Metric system)

Overall dimensions & prefab hole position drawing



Remarks: ⊗○-J=prefab hole of different dimensions; PG -dimension unit symbol of cable joints(British system);M - dimension unit symbol of cable joints(Metric system)

085 Series OEM

We will be your best supplier if you want special working. Our company has many facilities to satisfy your demands. We offer services such as lettering, wiring, providing terminals, universal joints, cable joints, buttons and indicators. Please attach the drawing with the OEM. (Details see P38.)

TYBOX

M

B08501

/

F

J

M-Product of special working

order type of standard product

order number of special configuration of height (offered by TAYEE)

Require addition of height

Require hinges

105 Series Standard Product



Product description

Two kinds of materials: Flame intense retardant ABS and PC

Degree of protection IP65

Two types: without prefab hole & with prefab hole

8 sizes

Two kinds of caps: gray & transparent caps; the transparent ones are all made of PC material

Installation cut-out inside for installation panel and rail fixation

Many kinds of accessories to choose.

Technical data

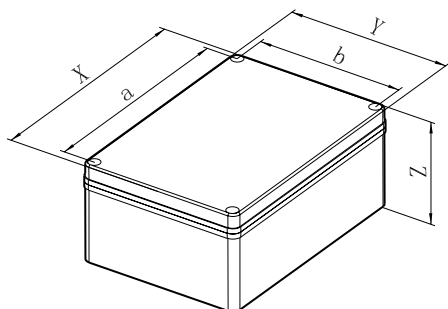
Material		Polycarbonate(PC)	ABS
Degree of protection		IP65	IP65
Anti-impact		IK08	IK07
Insulation protection		Complete insulation	Complete insulation
Temperature		-40°C~ 120°C	-40°C~ 80°C
Flame retardant		V ₂	V ₀
Chemical stability		Good	Good
Color	Base	RAL7040/RAL7021	RAL7032/RAL7021
	Cap	RAL7040/RAL7021	RAL7032/RAL7021
Toxicity		No halogen	No halogen
UV resistance			UL 508
RoHS compliant		YES	No

The details of the material see P4

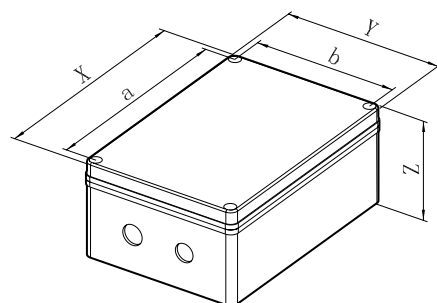
Note: 1. ABS Material enclosure box, If need it meets RoHS, can make special order but the box flame retardant is HB(no flame retardant).

2. The box of ABS and PC can be specially customized in black color. When ordering, remark BLACK after the model number.

Overall dimensions



105 series without prefab holes



105 series with prefab holes

105 series without prefab holes

Order type				Dimension		Accessory selection				
ABSgray cap	ABS transparent cap	PC gray cap	PC transparent cap	Size (x*y*z)	Cut-out center distance (a*b)	Hinges	Heightened	Panel Bottom	Plate	Hook
B10501	B10501C	P10501	P10501C	130 × 95 × 105	112 × 76	TJB	-	XB10501	-	TG1
B10502	B10502C	P10502	P10502C	200 × 150 × 105	182 × 132	TJB	F10502 PF10502	XB10502 QB10502	DB10502	TG1
B10503	B10503C	P10503	P10503C	250 × 175 × 105	232 × 156	TJD	F10503 PF10503	XB10503 QB10503	DB10503	TG1
B10504	B10504C	P10504	P10504C	300 × 200 × 105	280 × 180	TJD	F10504 PF10504	XB10504 QB10504	DB10504	TG1

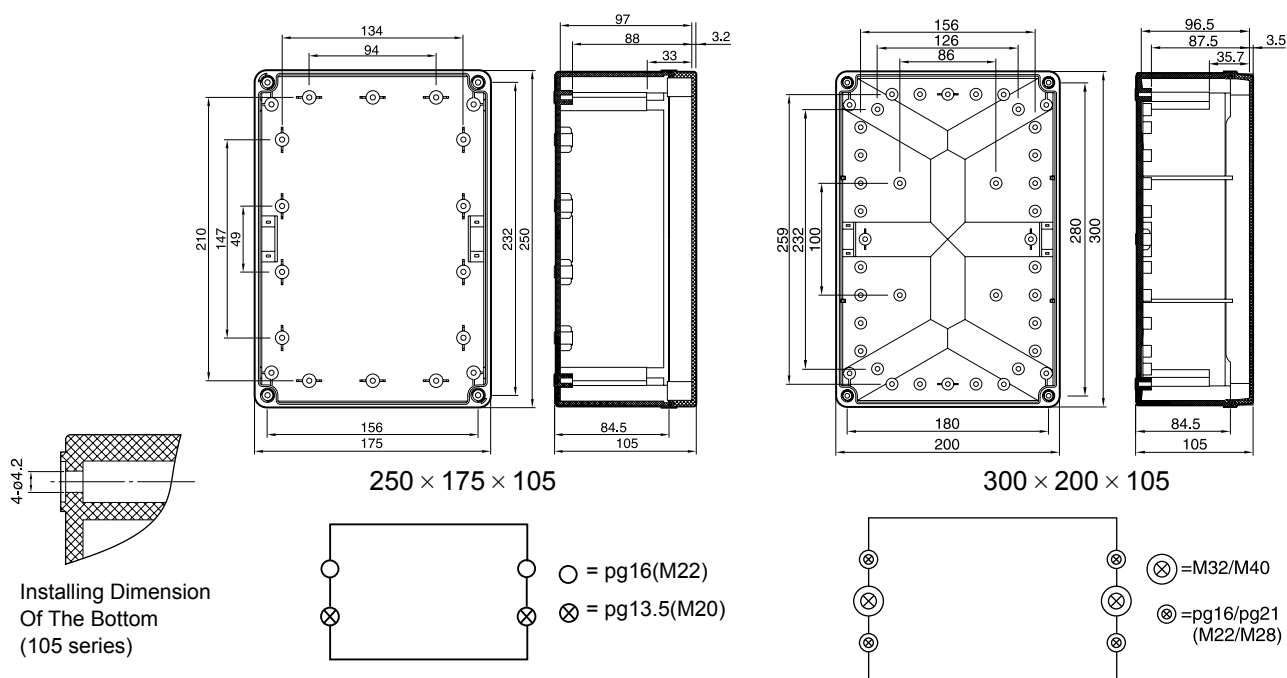
- No Such Function

105 series with prefab holes

Order type				Dimension		Accessory selection				
ABSgray cap	ABStransparent cap	PC gray cap	PC transparent cap	Size (x*y*z)	Cut-out center distance (a*b)	Hinges	Heightened	Panel Bottom	Plate	Hook
B10501A	B10501AC	P10501A	P10501AC	130 × 95 × 105	112 × 76	TJB	-	-		TG1
B10502A	B10502AC	P10502A	P10502AC	200 × 150 × 105	182 × 132	TJB	F10502 PF10502	XB10502 QB10502	DB10502	TG1
B10503A	B10503AC	P10503A	P10503AC	250 × 175 × 105	232 × 156	TJD	F10503 PF10503	XB10503 QB10503	DB10503	TG1
B10504A	B10504AC	P10504A	P10504AC	300 × 200 × 105	280 × 180	TJD	F10504 PF10504	XB10504 QB10504	DB10504	TG1

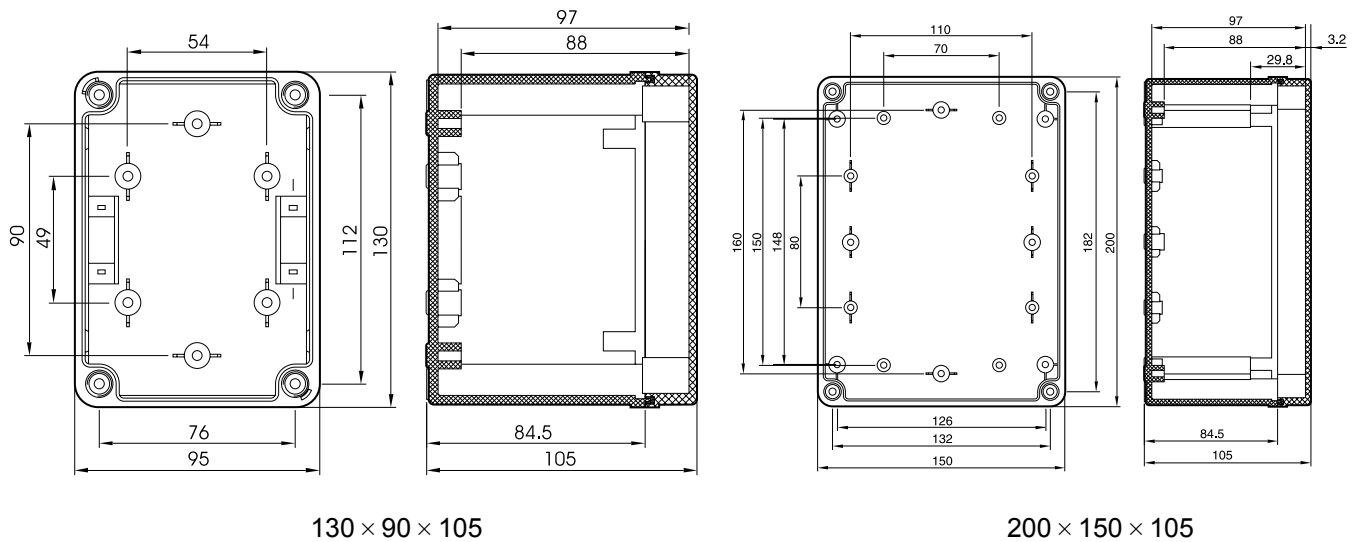
- No Such Function

Overall dimensions & prefab hole position drawing



Pemars: ○ ⊗ ⊗ - J=prelab hole of different dimensions; PG -dimension unit symbol of cable joints(British system);
M - dimension unit symbol of cable joints(Metric system)

Overall dimensions & prefab hole position drawing



Pemarks: ⊗○-J=prefab hole of different dimensions; PG -dimension unit symbol of cable joints(British system);M - dimension unit symbol of cable joints(Metric system)

105 Series OEM

We will be your best supplier if you want special working.Our company has many facilities to satisfy your demands.We offer services such as lettering,wiring,providing teminals,universal joints,cable joints,buttons and indicators.Please attach the drawing with the OEM.(Details see P40)

TYBOX	M	B10501	/		F	J
	M-Product of special working	order type of standard product		order number of special configuration (offered by TAYEE)	Require addition of height	Require hinges

165 Series Standard Product

Product description

Two kinds of materials: Flame intense retardant ABS and PC

Degree of protection IP65

Two types: without prefab hole & with prefab hole

2 sizes

Two kinds of caps: gray & transparent caps; the transparent ones are made of PC material

Installation cut-out inside for installation panel and rail fixation

Many kinds of accessories to choose.



技术参数

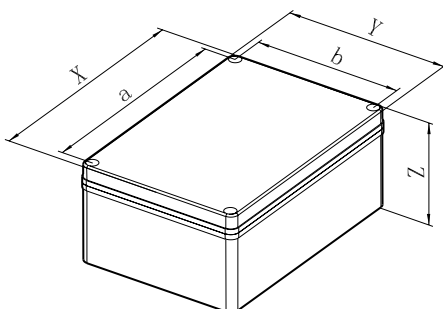
Material		Polycarbonate(PC)	ABS
Degree of protection		IP65	IP65
Anti-impact		IK08	IK07
Insulation protection		Complete insulation	Complete insulation
Temperature		-40°C~ 120°C	-40°C~ 80°C
Flame retardant		V ₂	V ₀
Chemical stability		Good	Good
Color	Base	RAL7040/RAL7021	RAL7032/RAL7021
	Cap	RAL7040/RAL7021	RAL7032/RAL7021
Toxicity		No halogen	No halogen
UV resistance		UL 508	
RoHs compliant		YES	NO

The details of the material see P4

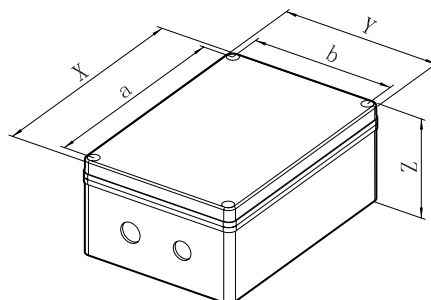
Note: 1. ABS Material enclosure box, If need it meets RoHS, can make special order but the box flame retardant is HB(no flame retardant).

2. The box of ABS and PC can be specially customized in black color. When ordering, remark BLACK after the model number.

Overall dimensions



165 series without prefab holes



165 series with prefab holes

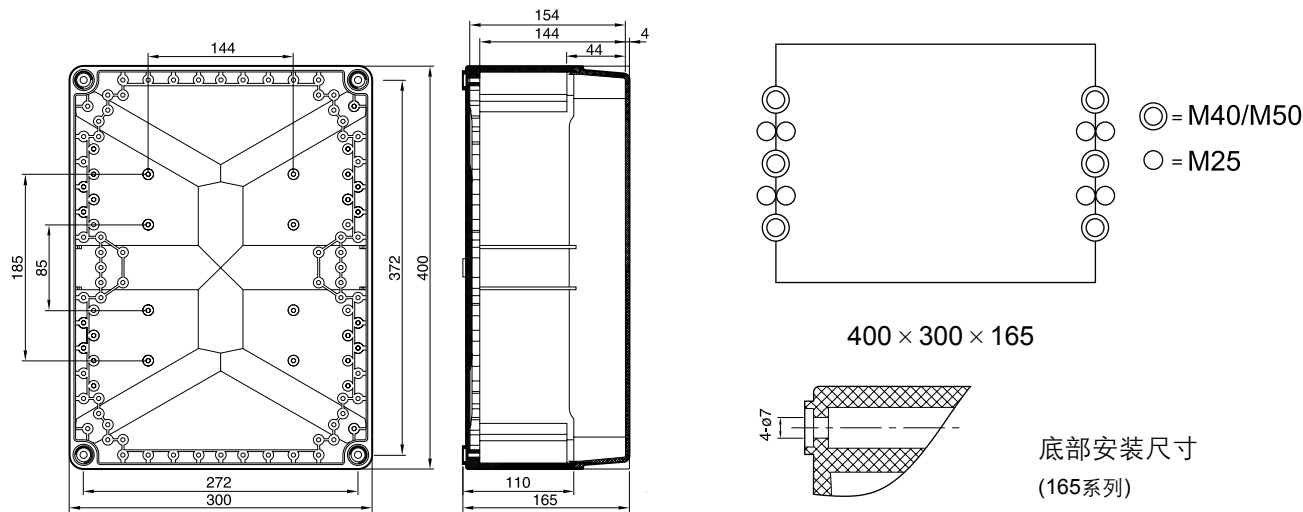
165 series without prefab holes

订货型号				尺寸		附件选择					
ABSgray cap	ABStrasparentcap	PC gray cap	PC transparent cap	Size (x*y*z)	Cut-out center distance(a*b)	Hinges	Heightened	Panel	Bottom Plate	Lock	Hook
B16501	B16501C	P16501	P16501C	400 × 300 × 165	372 × 272	TJD	F16501 PF16501	XB16501 QB16501	DB16501	DetailsP5	TG2

165 series with prefab holes

订货型号				尺寸		附件选择					
ABSgray cap	ABStrasparentcap	PC gray cap	PC transparent cap	Size (x*y*z)	Cut-out center distance(a*b)	Hinges	Heightened	Panel	Bottom Plate	Lock	Hook
B16501A	B16501AC	P16501A	P16501AC	400 × 300 × 165	372 × 272	TJD	F16501 PF16501	XB16501 QB16501	DB16501	DetailsP5	TG2

Overall dimensions & prefab hole position drawing



Pemarks: \odot \circ -prefab hole of different dimensions; PG -dimension unit symbol of cable joints(British system);M - dimension unit symbol of cable joints(Metric system)

165 Series OEM

We will be your best supplier if you want special working.Our company has many facilities to satisfy your demands.We offer services such as lettering,wiring,providing teminals,universal joints,cable joints, buttons and indicators.Please attach the drawing with the OEM.(Details see P40)

TYBOX	M	B16501	/	E	J
	M-Product of special working	order type of standard product		order number of special configuration of height (offered by TAYEE)	Require addition of height Require hinges

200 Series Standard Product

Product description

Two kinds of materials: Flame intense retardant ABS and PC

Degree of protection IP65

Two types: without/with prefab holes

2 sizes

Two kinds of caps: gray cap&transparent cap; the transparent ones are all made of PC material

Installation cut-out inside for installation panel and guide rail fixation

Many kinds of accessories to select.



技术参数

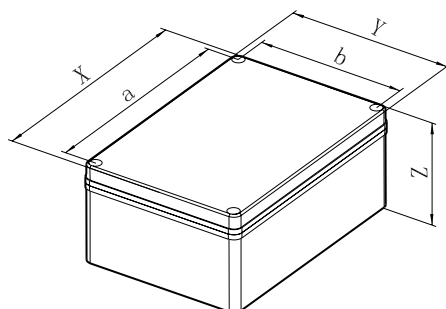
Material		Polycarbonate(PC)	ABS
Degree of protection		IP65	IP65
Anti-impact		IK08	IK07
Insulation protection		Complete insulation	Complete insulation
Temperature		-40°C~ 120°C	-40°C~ 80°C
Flame retardant		V ₂	V ₀
Chemical stability		Good	Good
Color	Base	RAL7040/RAL7021	RAL7032/RAL7021
	Cap	RAL7040/RAL7021	RAL7032/RAL7021
Toxicity		No halogen	No halogen
UV resistance		UL 508	
RoHs compliant		YES	NO

The details of the material see P4

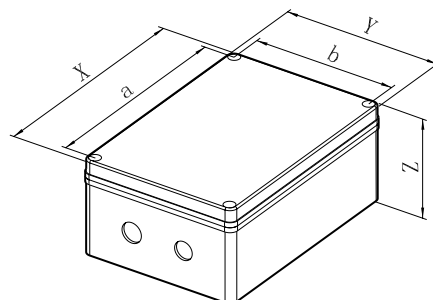
Note: 1. ABS Material enclosure box, If need it meets RoHS, can make special order but the box flame retardant is HB(no flame retardant).

2. The box of ABS and PC can be specially customized in black color. When ordering, remark BLACK after the model number.

Overall dimensions



200 series without prefab holes



200series with prefab holes

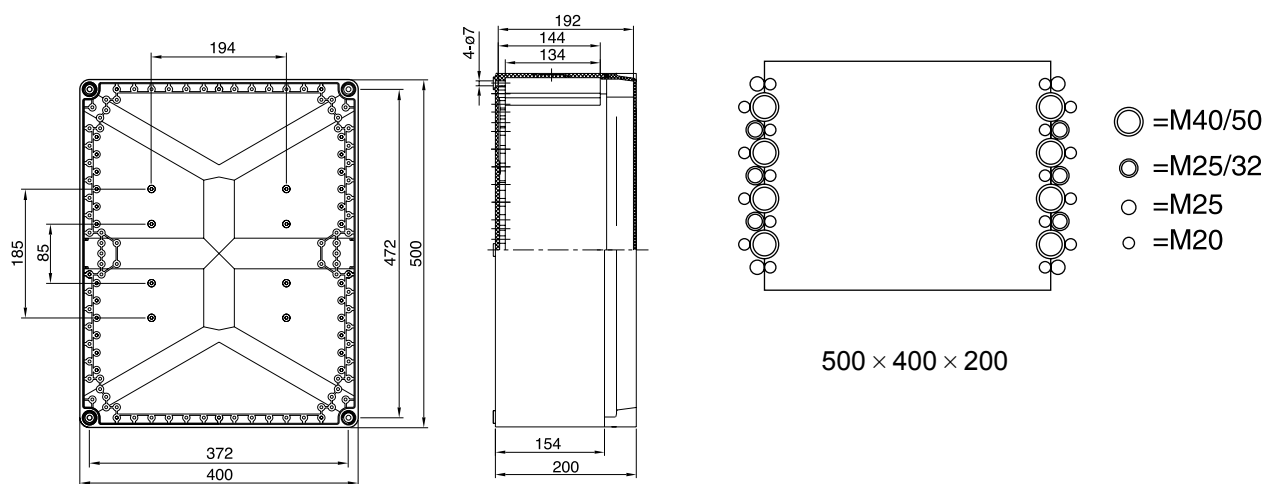
200 series without prefab holes

Order type				Dimension		Accessory selection					
ABSgray cap	ABStrasparentcap	PC gray cap	PC transparent cap	Size (x*y*z)	Cut-out center distance(a*b)	Hinges	Heightened	Panel	Bottom Plate	Lock	Hook
B20001	B20001C	P20001	P20001C	500 × 400 × 200	472 × 372	TJD	—	XB20001 QB20001	DB20001	DetailsP5	TG2

200 series with prefab holes

Order type				Dimension		Accessory selection					
ABSgray cap	ABStrasparentcap	PC gray cap	PC transparent cap	Size (x*y*z)	Cut-out center distance(a*b)	Hinges	Heightened	Panel	Bottom Plate	Lock	Hook
B20001A	B20001AC	P20001A	P20001AC	500 × 400 × 200	472 × 372	TJD	—	XB20001 QB20001	DB20001	DetailsP5	TG2

Overall dimensions & prefab hole position drawing



Pemarks: ○●-prefab hole of different dimensions; PG -dimension unit symbol of cable joints(British system);M - dimension unit symbol of cable joints(Metric system)

200 Series OEM

We will be your best supplier if you want special wording.Our company has many facilities to satisfy your demands. We offer services such as lettering,wiring,providing terminals,universal joints,cable joints,buttons and indicators. Please attach the drawing with the OEM(see P40)

TYBOX

M

B20001

/

F

J

M-Product of special working

order type of standard product

order number of special configuration of height (offered by TAYEE)

Require addition

Require hinges

TYX(065) Series Pushbutton Box

Product description

Two kinds of materials: Flame intense retardant ABS and PC

Degree of protection IP65

With prefab holes

2 sizes

Two kinds of caps: gray cap&transparent cap



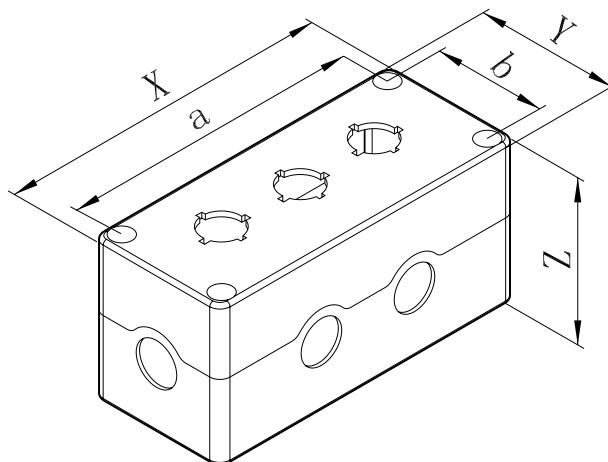
Technical data

Material		Polycarbonate(PC)	ABS
Degree of protection		IP65	IP65
Anti-impact		IK08	IK07
Insulation protection		Complete insulation	Complete insulation
Temperature		-40°C~ 120°C	-40°C~ 80°C
Flame retardant		V ₂	V ₀
Chemical stability		Good	Good
Color	Base	RAL7040	RAL70321
	Cap	RAL7040	RAL7032
Toxicity		No halogen	No halogen
UV resistance		UL 508	
RoHs compliant		YES	NO

The details of the material see P4

Note:ABS Material enclosure box, If need it meets RoHS, can make special order but the box flame retardant is HB(no flame retardant).

Overall dimensions

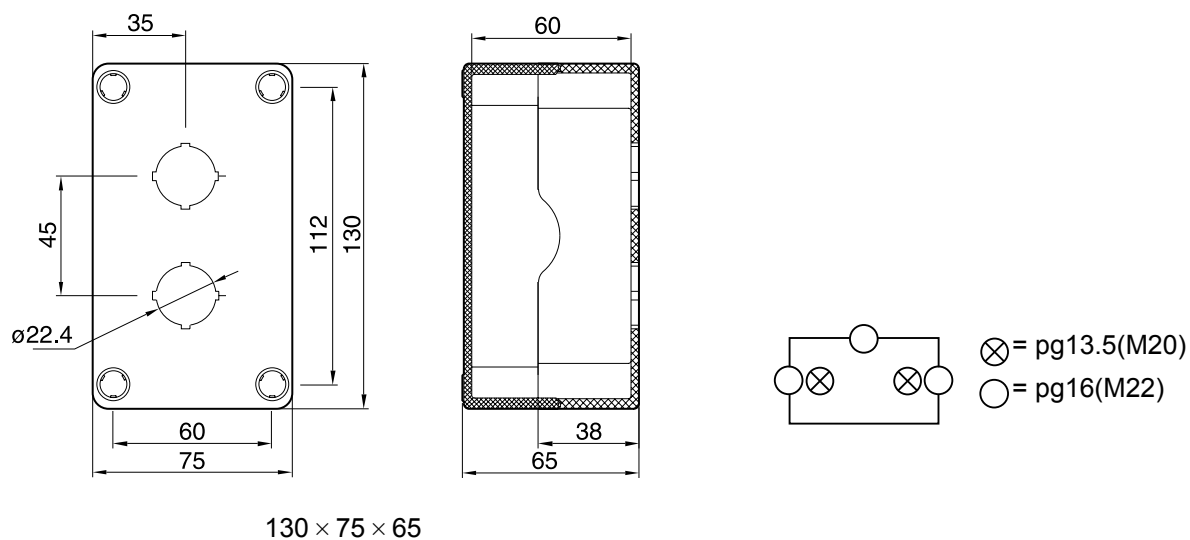
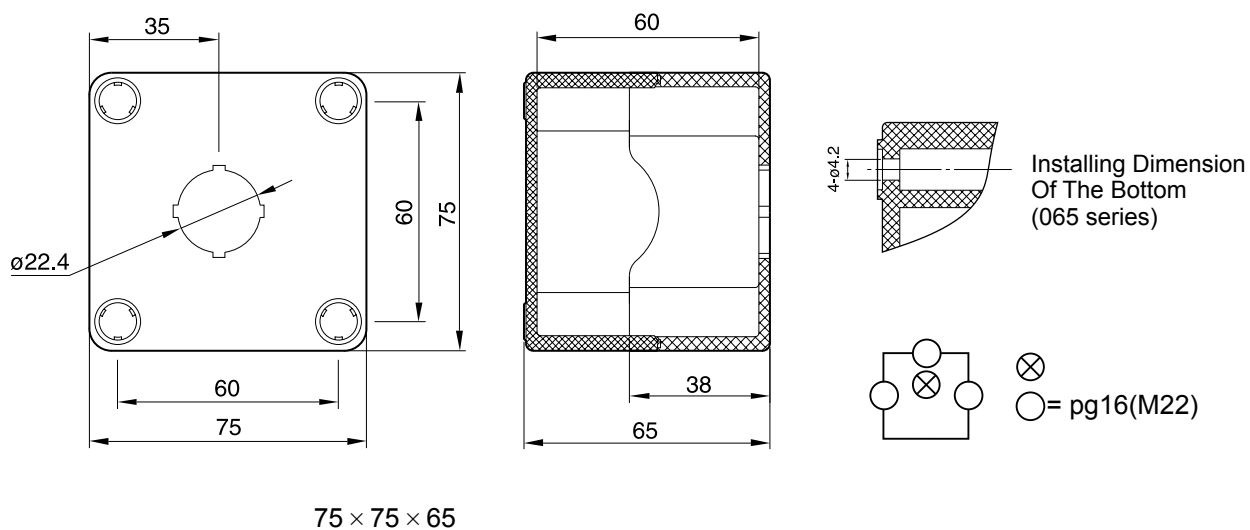


TYX(065) series with prefab holes IP65

Order type				Dimensions		Attachment selection			
ABSgrau cap	ABSyellow cap	PCgray cap		Size (x*y*z)	Cut-out center distance (a*b)	Hinges	Heightened	Panel	Hock
TYX1S	TYX1S/Y	TYX1SP		75 × 75 × 65	60 × 60	-	-	-	TG1
TYX2S	TYX2S/Y	TYX2SP		130 × 75 × 65	112 × 60	-	-	-	TG1
TYX3S	TYX3S/Y	TYX3SP		175 × 75 × 65	157 × 60	-	-	-	TG1
TYX4S	TYX4S/Y	TYX4SP		220 × 75 × 65	202 × 60	-	-	-	TG1

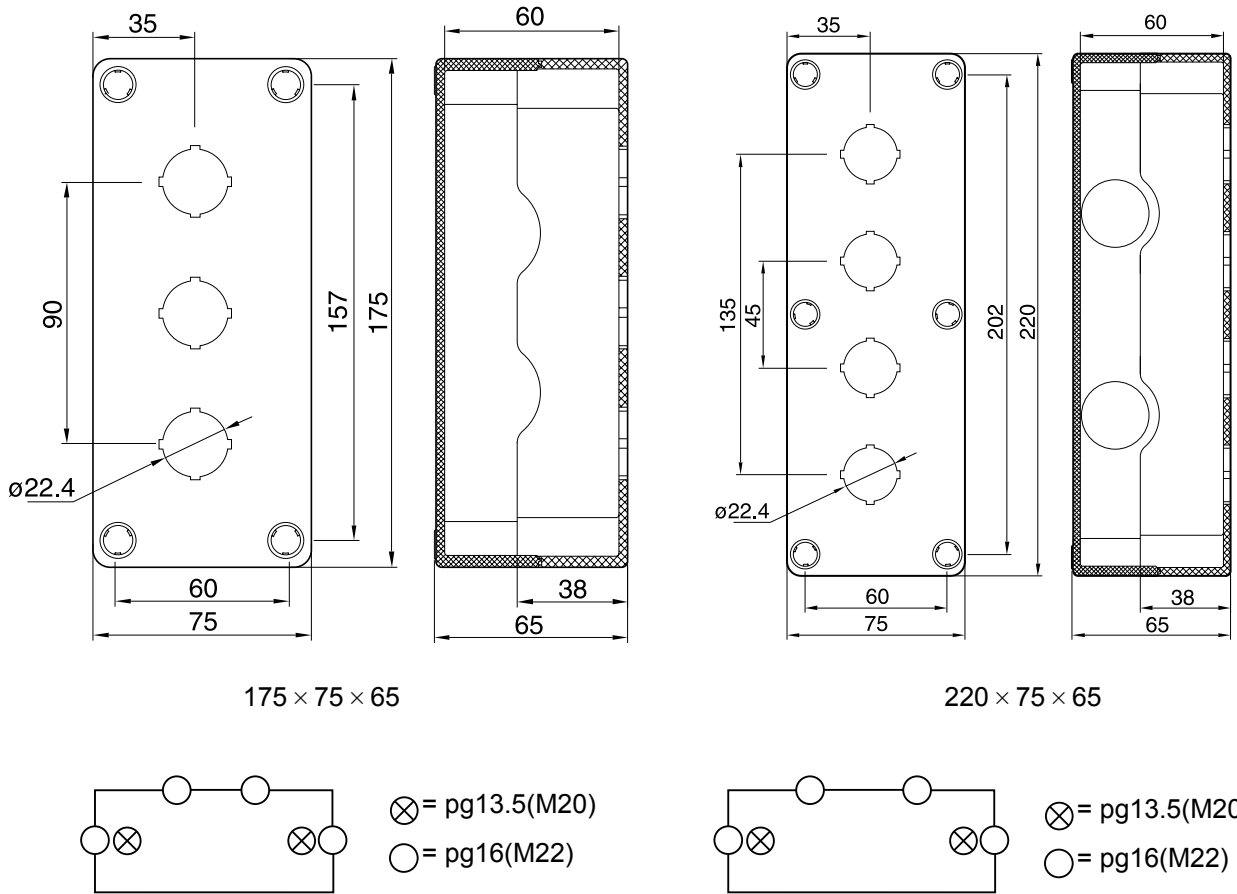
- No Such Function

Overall dimensions & prefab hole position drawing



Pemarks: ⊗○-J=prefab hole of different dimensions; PG -dimension unit symbol of cable joints(British system);M - dimension unit symbol of cable joints(Metric system)

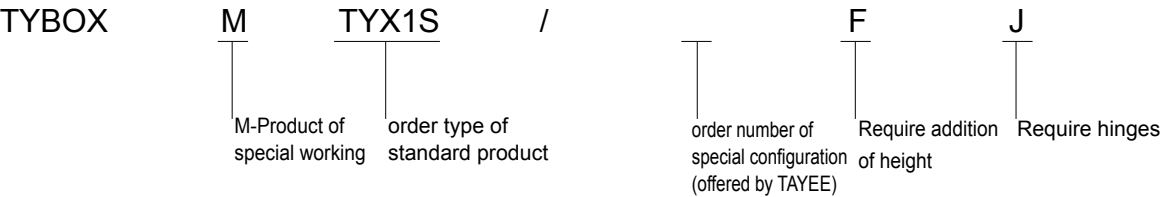
Overall dimensions & prefab hole position drawing



Pemarks: ⊗○-J=prefab hole of different dimensions; PG -dimension unit symbol of cable joints(British system);M - dimension unit symbol of cable joints(Metric system)

TYX(065) Series OEM

We will be your best supplier if you want special working. Our company has many facilities to satisfy your demands. We offer services such as lettering, wiring, providing teminals, universal joints, cable joints, buttons and indicators. Please attach the drawing with the OEM. (Details see P38.)



TYX(085) Series Pushbutton Box

Product description

Two kinds of materials: Flame intense retardant ABS and PC

Degree of protection IP65

With prefab holes

2 sizes

Two kinds of caps: gray cap&transparent cap



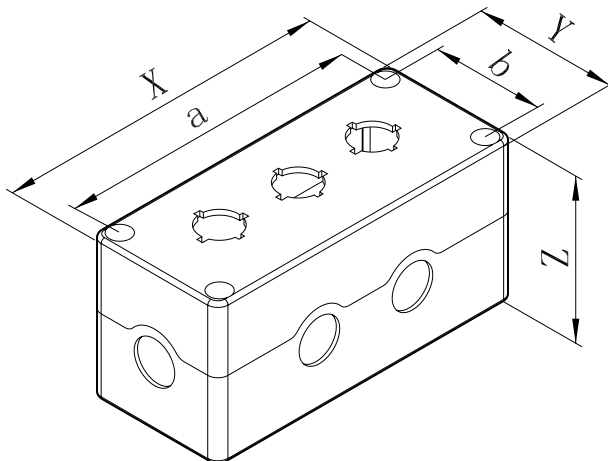
技术参数

Material		Polycarbonate(PC)	ABS
Degree of protection		IP65	IP65
Anti-impact		IK08	IK07
Insulation protection		Complete insulation	Complete insulation
Temperature		-40°C~ 120°C	-40°C~ 80°C
Flame retardant		V ₂	V ₀
Chemical stability		Good	Good
Color	Base	RAL7040	RAL7032
	Cap	RAL7040	RAL7032
Toxicity		No halogen	No halogen
UV resistance		UL 508	
RoHs compliant		YES	NO

The details of the material see P4

Note:ABS Material enclosure box, If need it meets RoHS, can make special order but the box flame retardant is HB(no flame retardant).

Overall dimensions

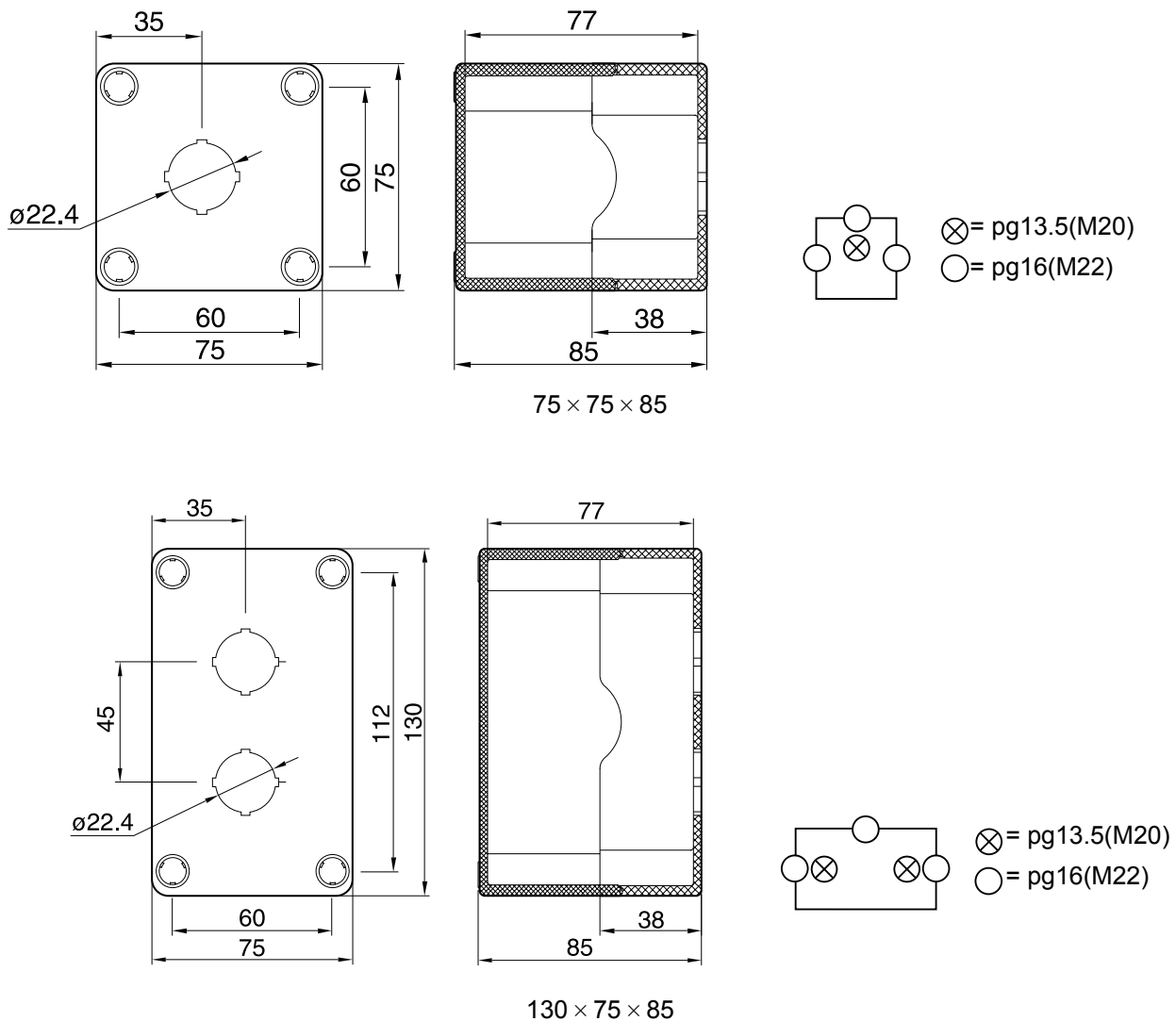


TYX(085) series with prefab holes IP65

Order type				Dimensions		Attachment selection			
ABSgrau cap	ABSyellow cap	PCgray cap		Size (x*y*z)	Cut-out center distance (a*b)	Hinges	Heightened Panel		Hock
TYX1	TYX1/Y	TYX1P		75 × 75 × 85	60 × 60	-	-	-	TG1
TYX2	TYX2/Y	TYX2P		130 × 75 × 85	112 × 60	-	-	-	TG1
TYX3	TYX3/Y	TYX3P		175 × 75 × 85	157 × 60	TJA	-	-	TG1
TYX4	TYX4/Y	TYX4P		220 × 75 × 85	202 × 60	TJC	-	-	TG1

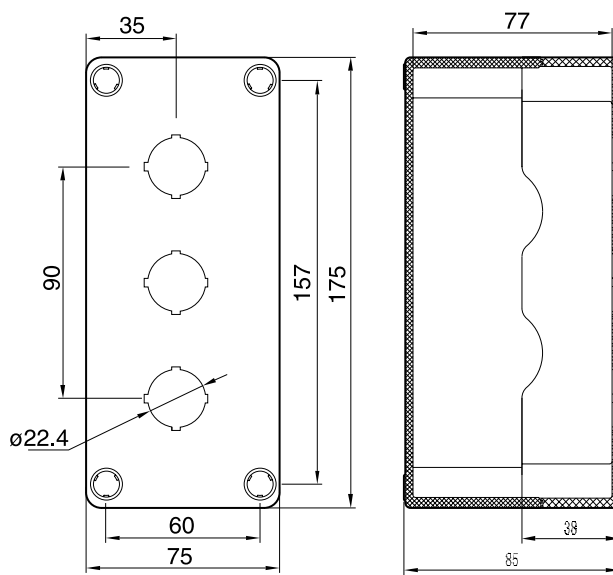
- No Such Function

Overall dimensions & prefab hole position drawing

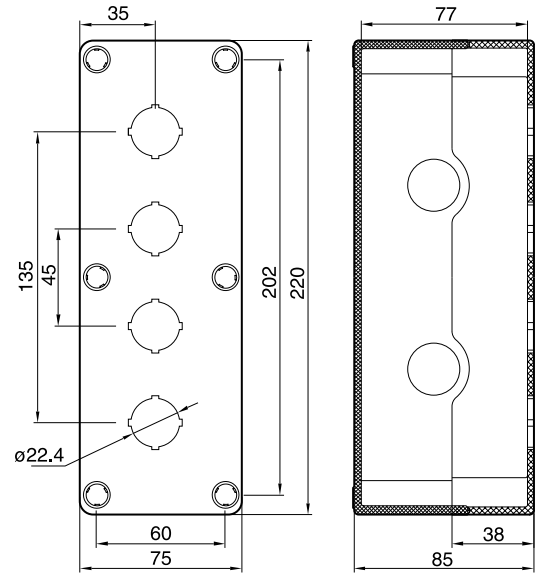


Remarks: \otimes \circ - J = prefab hole of different dimensions; PG - dimension unit symbol of cable joints (British system); M - dimension unit symbol of cable joints (Metric system)

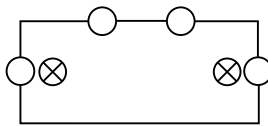
Overall dimensions & prefab hole position drawing



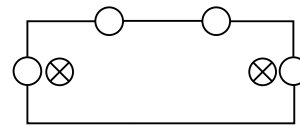
175 × 75 × 85



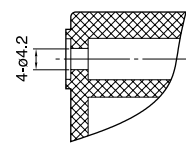
220 × 75 × 85



⊗ = pg13.5(M20)
○ = pg16(M22)



⊗ = pg13.5(M20)
○ = pg16(M22)



Installing Dimension
Of The Bottom
(085 series)

Pemarks: ⊗-J=prefab hole of different dimensions; PG -dimension unit symbol of cable joints(British system);M - dimension unit symbol of cable joints(Metric system)

TYX(085) Series OEM

We will be your best supplier if you want special working. Our company has many facilities to satisfy your demands. We offer services such as lettering, wiring, providing terminals, universal joints, cable joints, buttons and indicators. Please attach the drawing with the OEM. (Details see P40)

TYBOX

M

TYX4

/

F

J

M-Product of
special working

order type of
standard product

order number of
special configuration of height
(offered by TAYEE)

Require addition
of height

Require hinges

TYX(105) Series Pushbutton Box

Product description

Two kinds of materials: Flame intense retardant ABS and PC

Degree of protection IP65

With prefab holes

2 sizes

Two kinds of caps: gray cap&transparent cap



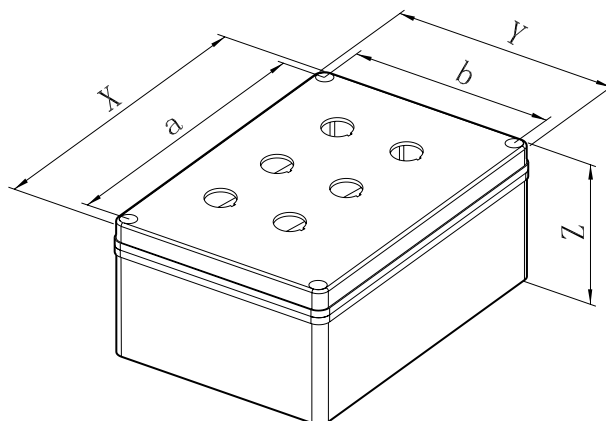
技术参数

Material		Polycarbonate(PC)	ABS
Degree of protection		IP65	IP65
Anti-impact		IK08	IK07
Insulation protection		Complete insulation	Complete insulation
Temperature		-40°C~ 120°C	-40°C~ 80°C
Flame retardant		V ₂	V ₀
Chemical stability		Good	Good
Color	Base	RAL7040	RAL7032
	Cap	RAL7040	RAL7032
Toxicity	No halogen	No halogen	
UV resistance		UL 508	
RoHs compliant		YES	NO

The details of the material see P4

Note:ABS Material enclosure box, If need it meets RoHS, can make special order but the box flame retardant is HB(no flame retardant).

Overall dimensions

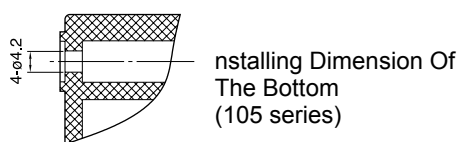
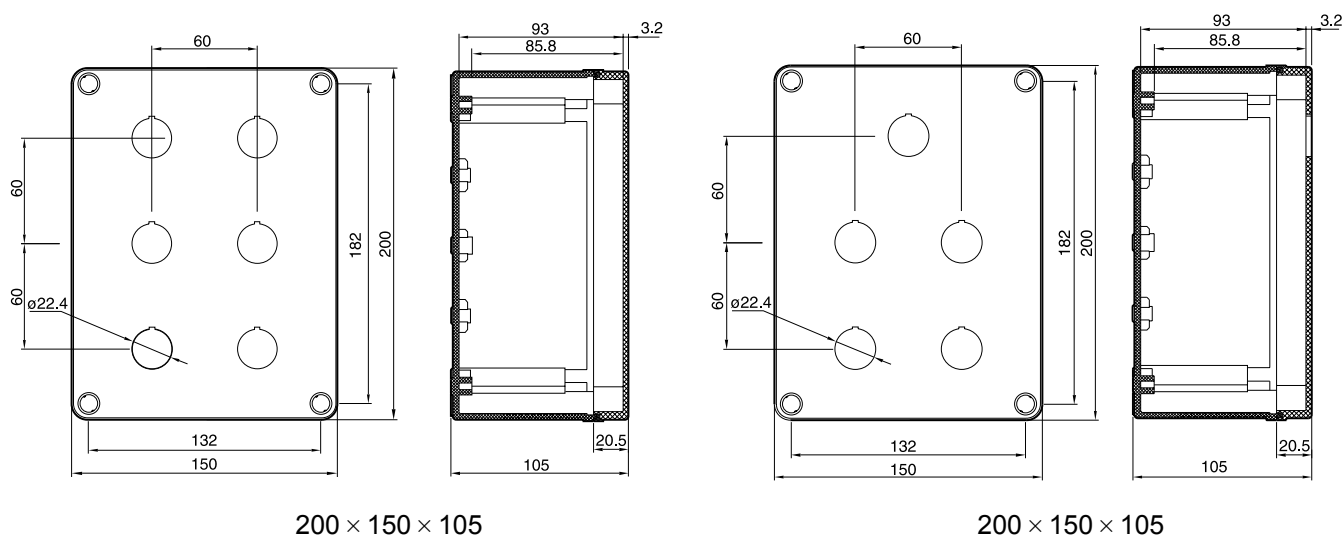


TYX(105) series with prefab holes IP65

Order type				Dimensions		Attachment selection			
ABS grau cap		PC gray cap		Size (x*y*z)	Cut-out center distance(a*b)	Hinges	Heightened	Pane	Hock
TYX5	-	TYX5P	-	200 × 150 × 105	182 × 132	-	-	-	TG1
TYX6	-	TYX6P	-	200 × 150 × 105	182 × 132	-	-	-	TG1

- No Such Function

Overall dimensions & prefab hole position drawing



TYX(105) Series OEM

We will be your best supplier if you want special working. Our company has many facilities to satisfy your demands. We offer services such as lettering, wiring, providing terminals, universal joints, cable joints, buttons and indicators. Please attach the drawing with the OEM. (Details see P40)

TYBOX

M

TYX5

/

F

J

M-Product of special working

order type of standard product

order number of special configuration of height (offered by TAYEE)

Require addition

Require hinges

TYX1 - 1(050)Series Pushbutton Box

Product description

Two kinds of material: Flame intense retardant ABS and PC

IP65 protection level

With prefab holes and gray cap



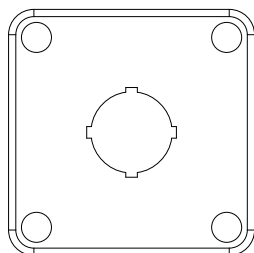
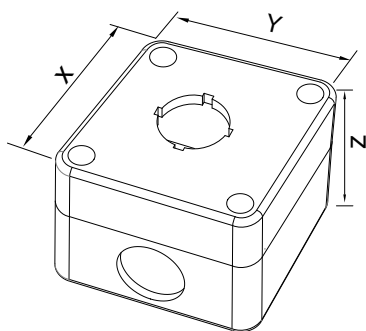
Technical Data

Material	Polycarbonate(PC)	ABS
Degree of protection	IP65	IP65
Anti-impact	IK08	IK07
Insulation protection	Complete insulation	Complete insulation
Temperature	-40°C ~ 120°C	-40°C ~ 80°C
Flame retardant	V ₂	V ₀
Chemical stability	Good	Good
Color	Base	RAL7040
	Cap	RAL7032 / RAL7021
Toxicity	No halogen	No halogen
UV resistance	UL 508	
RoHS compliant	YES	NO

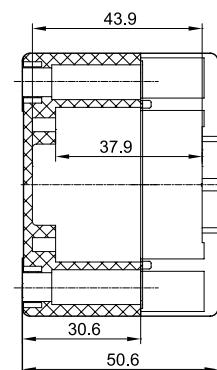
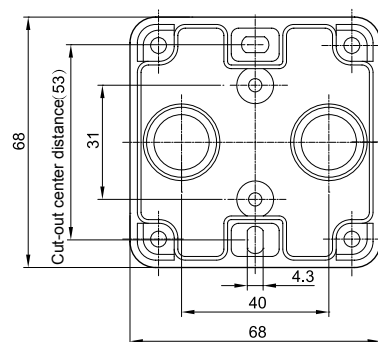
Mode

ABS gray cap TYX1-1	PC gray cap TYX1-1P	Size(x*y*z)	Cut-out center distance
		68*68*50	53

Overall dimensions



Overall dimensions & prefab hole position drawing



135 Series Standard Product

Product description

Two kinds of materials: Flame intense retardant ABS and PC

Degree of protection IP65

Two types: without prefab hole & with prefab hole

6 sizes

Two kinds of caps: gray & transparent caps; the transparent ones are made of PC material

Installation cut-out inside for installation panel and rail fixation

Many kinds of accessories to choose.



Technical data

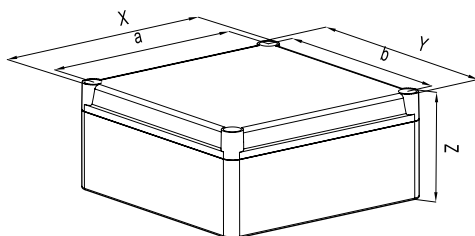
Material		Polycarbonate(PC)	ABS
Degree of protection		IP65	IP65
Anti-impact		IK08	IK07
Insulation protection		Complete insulation	Complete insulation
Temperature		-40°C ~ 120°C	-40°C ~ 80°C
Flame retardant		V ₂	V ₀
Chemical stability		Good	Good
Color	Base	RAL7040/RAL7021	RAL7032/RAL7021
	Cap	RAL7040/RAL7021	RAL7032/RAL7021
Toxicity		No halogen	No halogen
UV resistance		UL 508	
RoHs compliant		YES	NO

The details of the material see P4

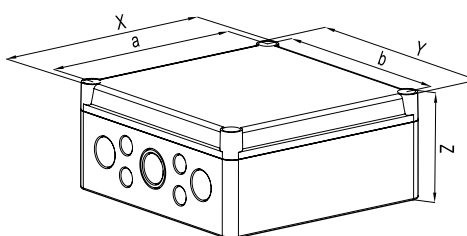
Note: 1. ABS Material enclosure box, If need it meets RoHS, can make special order but the box flame retardant is HB (no flame retardant).

2. The box of ABS and PC can be specially customized in black color. When ordering, remark BLACK after the model number.

Overall dimensions



135 series without prefab holes



135 series with prefab holes

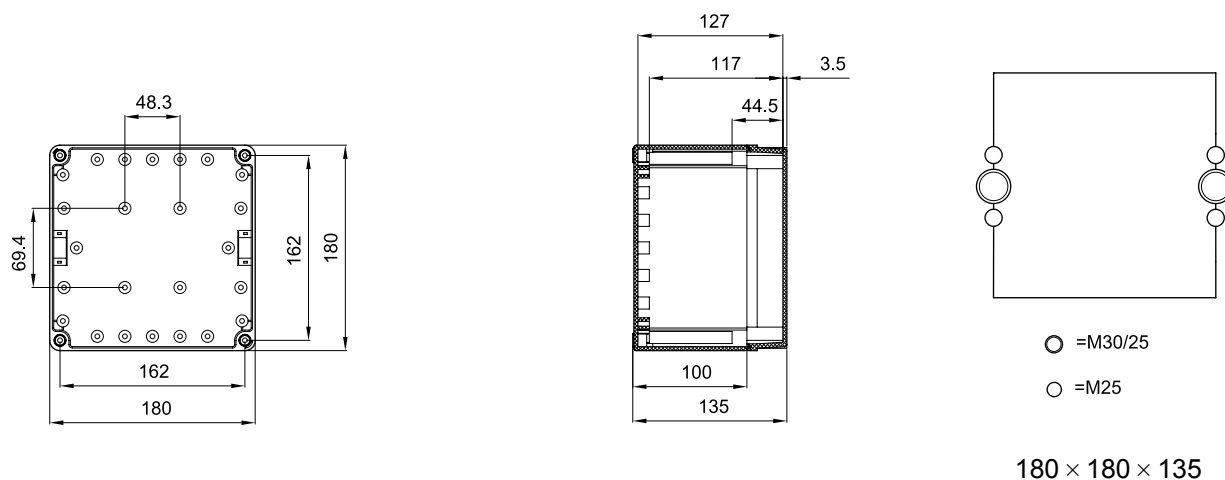
135 series without prefab holes

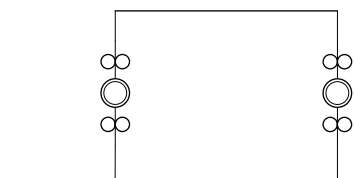
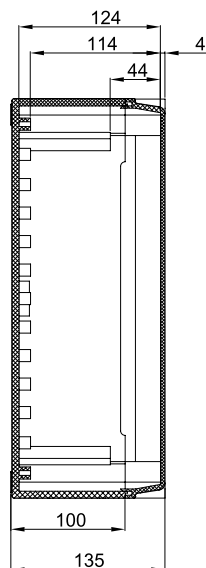
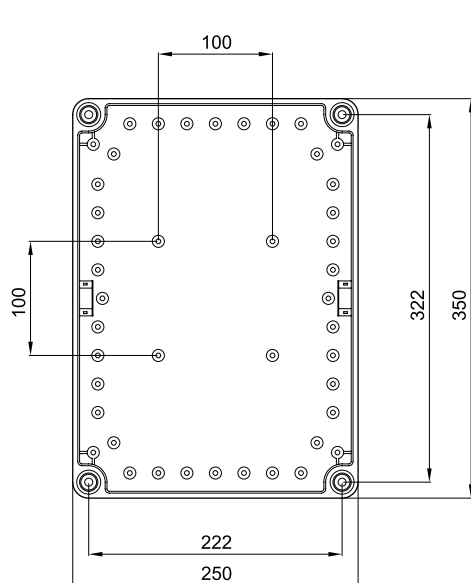
Order type				Dimension		Accessory selection					
ABSgray cap	ABStransparent cap	PC gray cap	PC transparent cap	Size (x*y*z)	Cut-out center distance (a*b)	Hinges	Heightened	Panel	Panel Bottom	Lock	Hook
B13501	B13501C	P13501	P13501C	180 × 180 × 135	162 × 162	TJB/ TJD	—	XB13501 QB13501	DB13501	DetailsP5	TG1
B13502	B13502C	P13502	P13502C	250 × 350 × 135	222 × 322	TJB/ TJD	—	XB13502 QB13502	DB13502	DetailsP5	TG2
B13503	B13503C	P13503	P13503C	300 × 300 × 135	272 × 272	TJB/ TJD	—	XB13503 QB13503	DB13503	DetailsP5	TG2

135 series with prefab holes

Order type				Dimension		Accessory selection					
ABSgray cap	ABStransparent cap	PC gray cap	PC transparent cap	Size (x*y*z)	Cut-out center distance (a*b)	Hinges	Heightened	Panel	Panel Bottom	Lock	Hook
B13501A	B13501AC	P13501A	P13501AC	180 × 180 × 135	162 × 162	TJB/ TJD	—	XB13501 QB13501	DB13501	DetailsP5	TG1
B13502A	B13502AC	P13502A	P13502AC	250 × 350 × 135	222 × 322	TJB/ TJD	—	XB13502 QB13502	DB13502	DetailsP5	TG2
B13503A	B13503AC	P13503A	P13503AC	300 × 300 × 135	272 × 272	TJB/ TJD	—	XB13503 QB13503	DB13503	DetailsP5	TG2

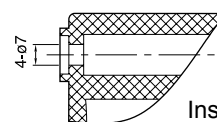
Overall dimensions & prefab hole position drawing



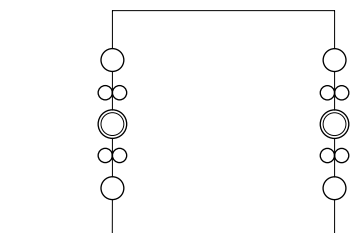
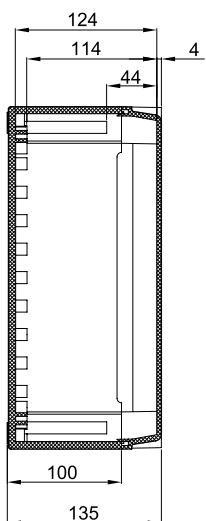
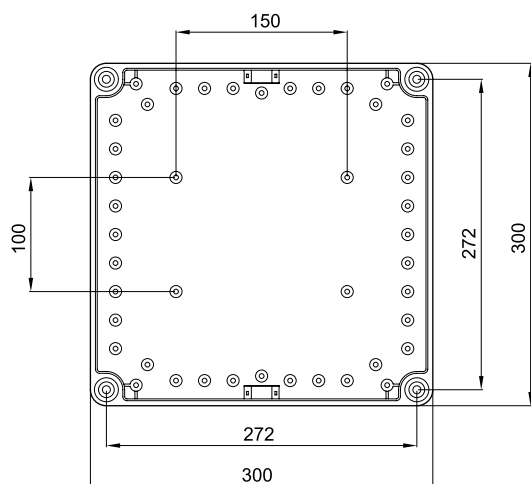


○ =M50/40
○ =M25

250 × 350 × 135

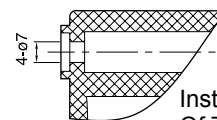


Installing Dimension
Of The Bottom



○ =M40
○ =M50/40
○ =M25

300 × 300 × 135



Installing Dimension
Of The Bottom

135 Series OEM

We will be your best supplier if you want special working. Our company has many facilities to satisfy your demands. We offer services such as lettering, wiring, providing terminals, universal joints, cable joints, buttons and indicators. Please attach the drawing with the OEM. (Details see P40)

TYBOX

M

B13501

/

F

J

M-Product of
special working

order type of
standard product

order number of
special configuration of height
(offered by TAYEE)

Require addition

Require hinges

130 Series Standard Product

Product description

Two kinds of materials: Flame intense retardant ABS and PC

Degree of protection IP65

Two types: without prefab hole & with prefab hole

2 sizes

Two kinds of caps: gray & transparent caps; the transparent ones are all made of PC material

Installation cut-out inside for installation panel and rail fixation

Many kinds of accessories to choose.



Technical data

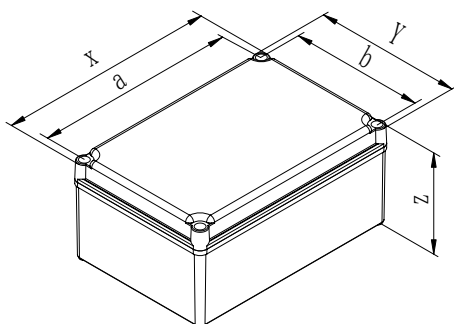
Material		Polycarbonate(PC)	ABS
Degree of protection		IP65	IP65
Anti-impact		IK08	IK07
Insulation protection		Complete insulation	Complete insulation
Temperature		-40°C~ 120°C	-40°C~ 80°C
Flame retardant		V ₂	V ₀
Chemical stability		Good	Good
Color	Base	RAL7040/RAL7021	RAL7032/RAL7021
	Cap	RAL7040/RAL7021	RAL7032/RAL7021
Toxicity		No halogen	No halogen
UV resistance		UL 508	
RoHs compliant		YES	NO

The details of the material see P4

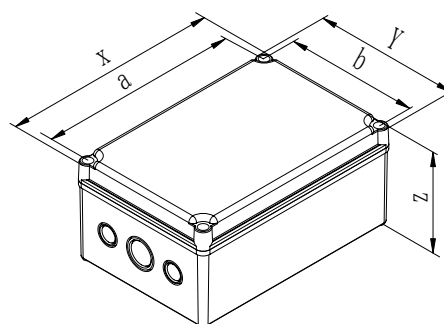
Note: 1. ABS Material enclosure box, If need it meets RoHS, can make special order but the box flame retardant is HB(no flame retardant).

2. The box of ABS and PC can be specially customized in black color. When ordering, remark BLACK after the model number.

Overall dimensions



130 series without prefab holes



130 series with prefab holes

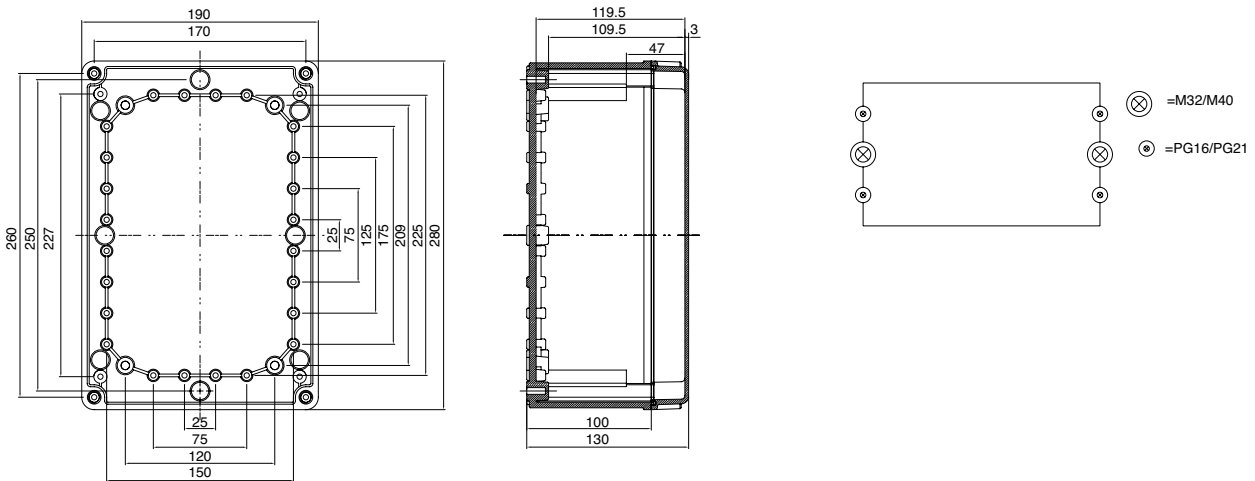
130 series without prefab holes

Order type				Dimension		Accessory selection						
ABSgray cap	ABStransparent cap	PC gray cap	PC transparent cap	Size (x*y*z)	Cut-out center distance (a*b)	Hinges	Heightened	Panel	Panel Bottom	Lock	Hook	
B13001	B13001C	P13001	P13001C	280 × 190 × 130	260 × 170	TJD	F13001 PF13001	XB13001 QB13001	DB13001	DetailsP5	TG1	

130 series with prefab holes

Order type				Dimension		Accessory selection						
ABSgray cap	ABStransparent cap	PC gray cap	PC transparent cap	Size (x*y*z)	Cut-out center distance (a*b)	Hinges	Heightened	Panel	Panel Bottom	Lock	Hook	
B13001A	B13001AC	P13001A	P13001AC	280 × 190 × 130	260 × 170	TJD	F13001 PF13001	XB13001 QB13001	DB13001	DetailsP5	TG1	

Overall dimensions & prefab hole position drawing



Pemarks: ○●-prefab hole of different dimensions; PG -dimension unit symbol of cable joints(British system);M - dimension unit symbol of cable joints(Metric system)

130 Series OEM

We will be your best supplier if you want special working.Our company has many facilities to satisfy your demands.We offer services such as lettering,wiring,providing teminals,universal joints,cable joints,buttons and indicators.Please attach the drawing with the OEM.(Details see P40)

TYBOX

M

B13001

/

F

J

M-Product of
special working

order type of
standard product

order number of
special configuration
(offered by TAYEE)

Require addition
of height

Require hinges

Casting aluminum waterproof enclosure box

Products description

Casting aluminum waterproof enclosure box used for installing terminals and other industrial original control, the requirements for electromagnetic shielding, high solid, good heat transfer performance of the industry is the ideal choice, such as industrial manufacturing, chemicals, mining, offshore platforms or other harsh environments.

With high impact resistance, vibration performance

Good chemical resistance

Enclosure box can be processed, painting, screen printing and other custom processing



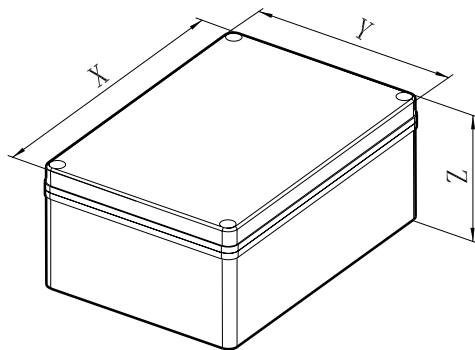
Technical Data

Material	Casting Aluminum
Degree of protection	IP66
Anti-impact	IK08
Temperature	-40°C~ 125°C
Chemical resistance	Good
Color	Overall internal and external spray(Beige RAL9001)

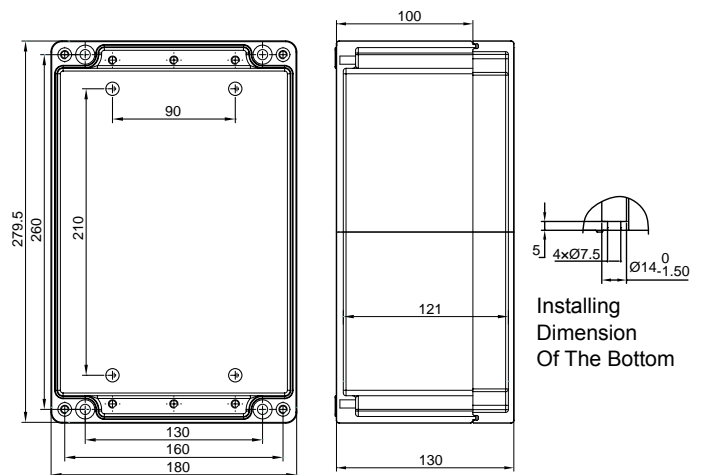
Model:

Model	Size		Attachment to choose
Cast aluminum A13001	size (x*y*z) 280*180 *130	Cut-out center distance 260*130	No

Overall dimensions



Overall dimensions & prefab hole position drawing



TYBOX enclosure special working order list

Model Number TYBOX

-

M

Product of special working

B10502

order type of stankdard product

/

1001

order number of special configuration (offered by TAYEE)

F

J

accessory working code

F-Require addition of height, J-require higes

Standard Type of Box		B10502		order number of special configuration (offered by TAYEE)		1001	
model and quantity of the products	J42connrvyinh terminal	15片J42-2.5					
	AD17indicator ø8-ø30	AD17-22/AC220V R					
	LA42pushbutton ø22	LA42P-11/R 1 LA42X2-11/B 1					
	LA42(B)pushbutton ø16						
	LA42(S)pushbutton ø16						
	LA423pushbutton ø30						
	LW42cam switch	LW42A2-2825					
configuration of accessories	Cut-out and cable joints	Surface A upward side	Surface B downward side	Surface C left side		Surface D right side	
			2 PG16	2 M20hole			
	Hinges			TJA			
	Heightened layer	F10502					
	Hook	TG1					
	Installation panel	XB10502					
other requirement							

Remarks:Please list the necessary products and accessory configurations in the above form if you need special configuration or wt,according to which an order number will be generated.If you have special demands for installed location of products and accessories,please attach the drawings.

TYBOX enclosure special working order list

Model Number TYBOX - M /
 Product of special working order type of standard product order number of special configuration (offered by TAYEE) accessory working code
 F-Require addition of height, J-require higes

Standard Type of Box		order number of special configuration (offered by TAYEE)			
model and quantity of the products	J42connrvyinh terminal				
	AD17indicator ø8-ø30				
	LA42pushbutton ø22				
	LA42(B)pushbutton ø16				
	LA42(S)pushbutton ø16				
	LA423pushbutton ø30				
	LW422cam switch				
configuration of accessories	Cut-out and cable joints	Surface A upward side	Surface B downward side	Surface C left side	Surface D right side
	Hinges				
	Heightened layer				
	Hook				
	Installation panel				
other requirement					

Remarks:Please list the necessary products and accessory configurations in the above form if you need special configuration or wt,according to which an order number will be generated.If you have special demands for installed location of products and accessories,please attach the drawings.



TYIPB



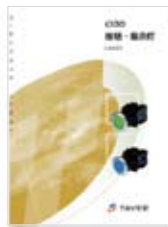
TYIPS



TYIP



TYIPA



TY3IP



TYZHD



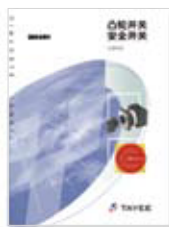
TYJSD



TYJSDS



TYJSDT



TYLW



TYX



TYBOX



TYZC



TYJ



TYCJ



LED



TYC



TYX42B



More detailed information is available for taking.
Technology changes with each passing day, please feel free to contact to card when this version information.

Website qr code



Low qr code



More products information, please visit the website to download or for cd-rom electronic information.
Thank you for your contribution to the energy conservation and environmental protection!

Shanghai TAYEE Electric Co.,Ltd.

Factory: 101 Beimin Road, Songjiang District, Shanghai
Tel: 021-57776240 Fax :021-67654522 Postal Code: 201611
Sales: 889 Yishan Road, Qilai Building Room 1702 Shanghai
Tel: 021-54012233 Fax :021-54012399 Postal Code:200233
<http://www.tayee.com.cn> Email:sale@tayee.com.cn

Hotline: 400 820 4217